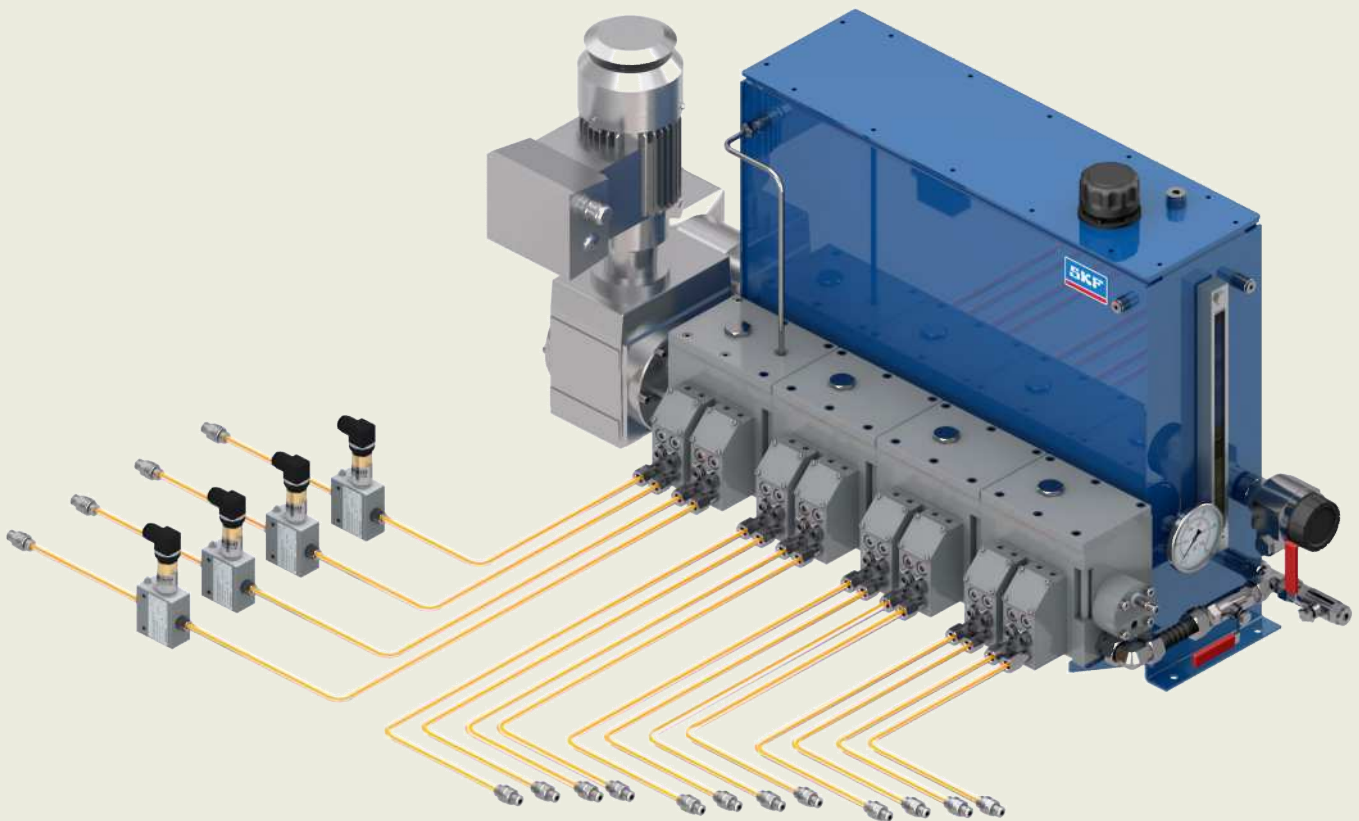


# Multi-line automatic lubrication systems

Product catalogue 2021



## Table of content

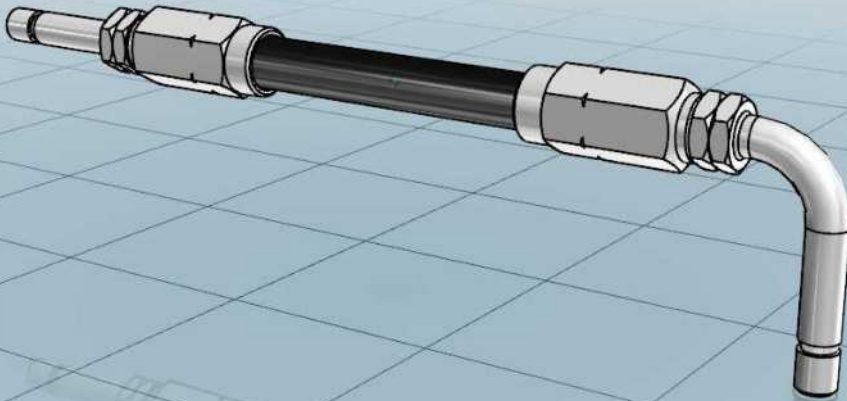
Electronic part library . . . . .	4	Overview of control units . . . . .	51
Lubricants suitable for lubrication systems . . . . .	5	IGZ/EXZT . . . . .	52
Multi-line lubrication systems for oil . . . . .	6	EOT-2 . . . . .	54
Multi-line lubrication systems for grease . . . . .	8	LMC2 . . . . .	55
		LMC301 . . . . .	56
<b>Overview of multi-line oil pumps and pump units. . . . .</b>	<b>11</b>	<b>Overview of monitoring devices. . . . .</b>	<b>59</b>
SP/G . . . . .	12	SP/SFE 30 . . . . .	60
RA ... U . . . . .	14	EWT2A . . . . .	61
55i . . . . .	16	234-13161-5 . . . . .	62
JM . . . . .	18	2340-00000108 . . . . .	63
PDYY, PDYC and PDYS . . . . .	20	<b>Index . . . . .</b>	<b>64</b>
PC . . . . .	22		
RA ... M/RAB . . . . .	24		
SP/PFE . . . . .	28		
<b>Overview of multi-line grease pumps . . . . .</b>	<b>31</b>		
PFHM-ATEX . . . . .	32		
RA20/45 . . . . .	34		
P205 . . . . .	36		
FF . . . . .	38		
P212 . . . . .	40		
P215 . . . . .	42		
FB/FB-XL . . . . .	44		
FB-XL . . . . .	46		
P230 . . . . .	48		

## Navigation

Introduction . . . . .	2
Pumps and pump units for oil . . . . .	11
Pumps and pump units for grease . . . . .	31
Control units. . . . .	51
Monitoring devices. . . . .	59

## Electronic part library

# CAD product data



### Find your parts online

3D CAD data, technical drawings and data sheets of SKF automatic lubrication system components are now available in native format in the online parts library. In addition to enjoying easy CAD downloads, you can configure more complex lubrication system products and integrate them into your design process – completely free of charge. Integrate CAD data seamlessly into your layout plans without any delay.



<https://skf-lubrication.partcommunity.com>

### Use the parts library app

In addition to the electronic parts library, SKF offers a mobile app that allows you to use the SKF CAD download portal for lubrication systems. The LubCAD app lets you view, configure and download products and parts in the most common CAD file formats. You can also download related product brochures or find an authorized distributor in your area.

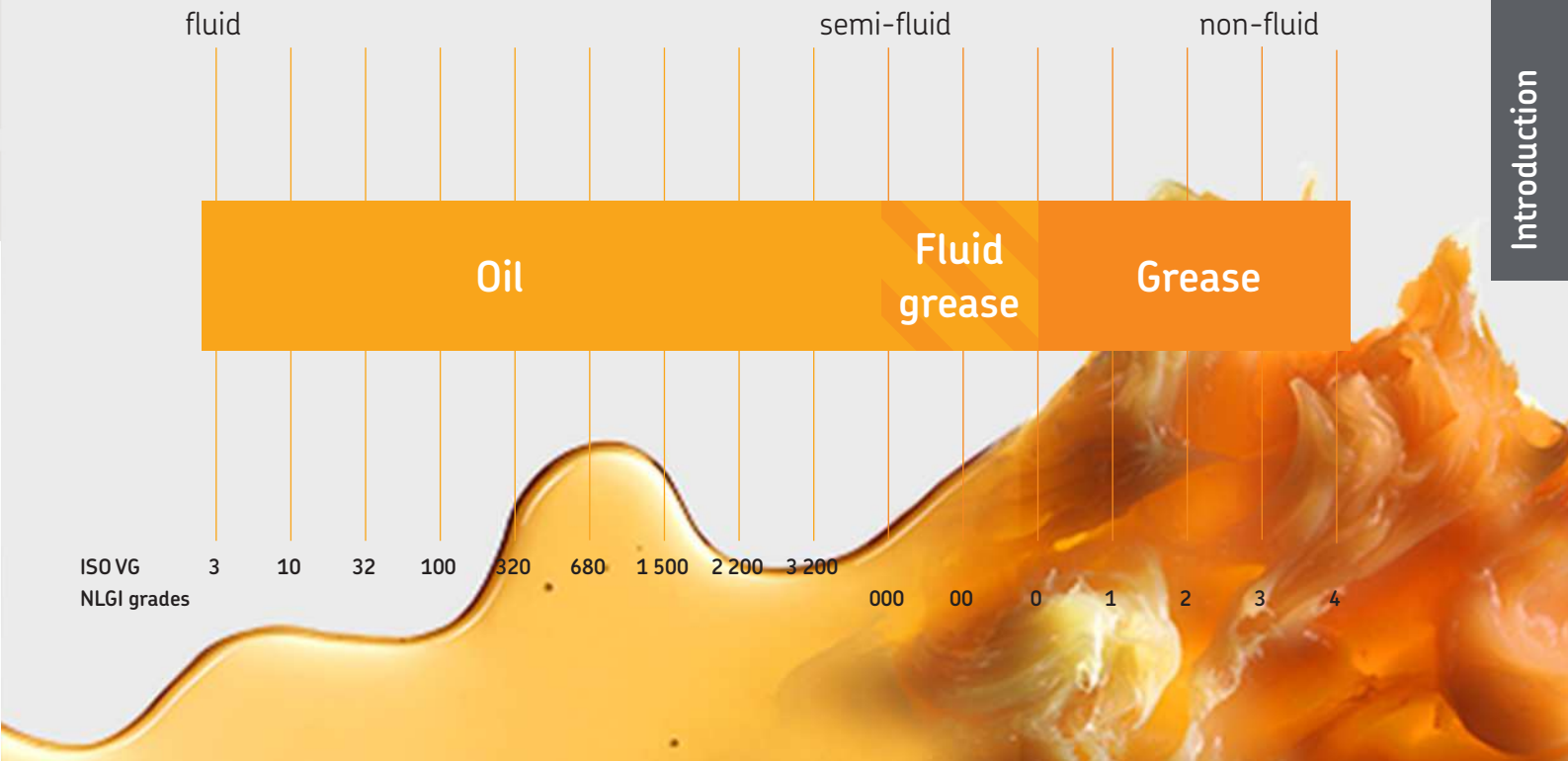


Apple App Store



Google Play

# Lubricants suitable for lubrication systems



## Oil and fluid grease

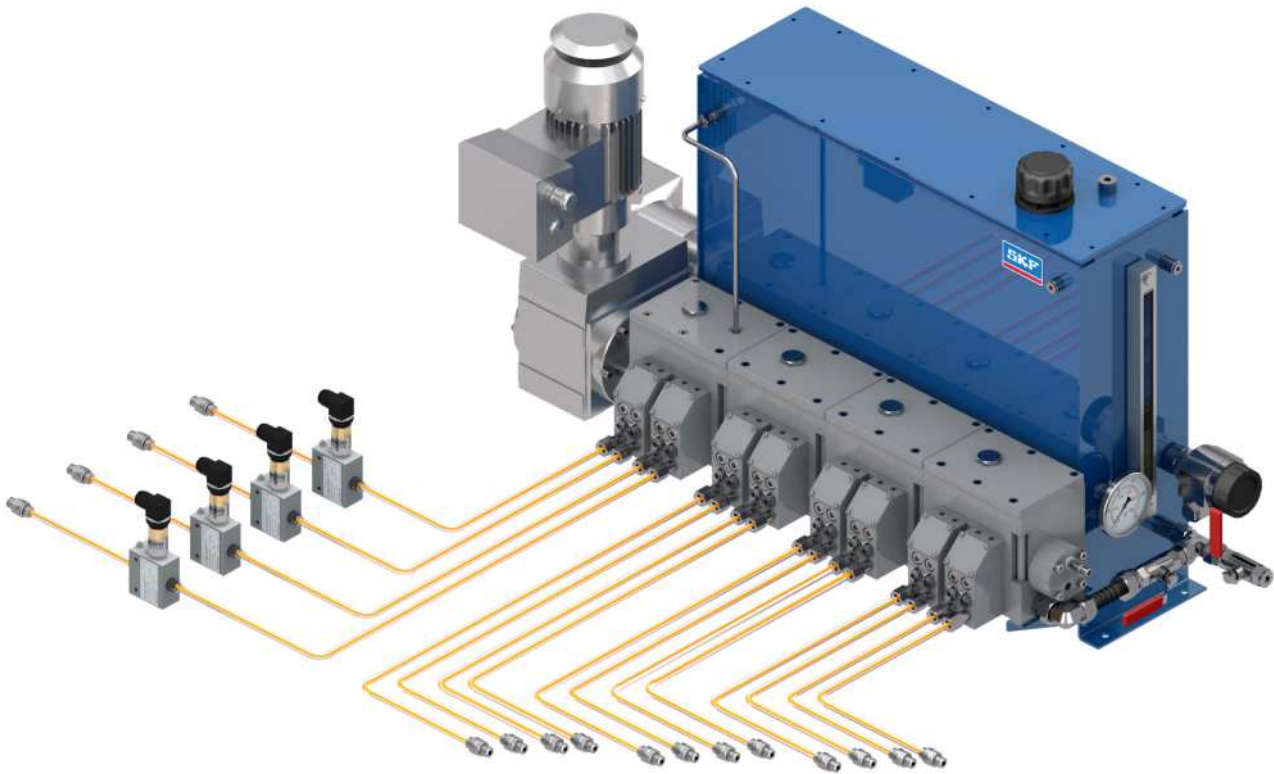
The viscosity is an expression of a fluid's internal friction. Oils are classified in ISO VG viscosity classes from 2 to 3 200. NLGI grade 000, 00 and 0 greases are called fluid greases. Different types of oils are available, including mineral oils, organic oils and synthetic oils. A compatibility check is recommended prior to using any oil with SKF lubrication systems.



## Grease

Greases are consistent lubricants (NLGI grade 1–6). They are soft to hard, triple-component mixtures of a base oil as the lubricating fluid, a thickening agent and additives. In most instances, greases of NLGI grade 1 up to 3 are suitable for use in a lubrication system. A compatibility check should be made prior to using any grease with SKF lubrication systems.

## Multi-line lubrication systems for oil



### System description

SKF multi-line lubrication systems consist of the following components: a pump unit, control and monitoring devices, tubing and fittings. Multi-line pump units supply lubricant to lubrication points without extra metering dividers. Thus, each lubrication point has its own pumping element. The system design is simple, accurate and most reliable.

Multi-line pumps can be actuated mechanically, electrically or hydraulically. The easily exchangeable pumping elements are usually operated by eccentric cam. Depending on drive speed, gearbox ratio and selected pump element size, a delivery range from almost 0 to 227 cm<sup>3</sup>/min (0 to 13,85 in<sup>3</sup>/min) can be covered.

By selecting pumping elements with different piston diameters and/or stroke settings, an individual lubrication volume setting per pump outlet is possible. The potential number of outlets ranges from 1 to 28.

SKF multi-line oil pumps are designed for demanding applications in nearly all industries and for pressure requirements up to 4 000 bar (58 000 psi).

#### Advantages:

- Sturdy; durable pump series designed for 24/7 operation
- Simple; continuous lubrication without electrical cycle timers, in most cases
- Versatile; select individual pump element characteristics and oil reservoir size
- Precise; set the required stroke volume at the pumping element
- High delivery speed in milliseconds for timed and pinpointed lubrication (PD series)
- Broad viscosity range due to special designs and small piston clearance
- ATEX explosion-proof versions available
- Extra, downstream-located flow control valves or progressive metering devices possible

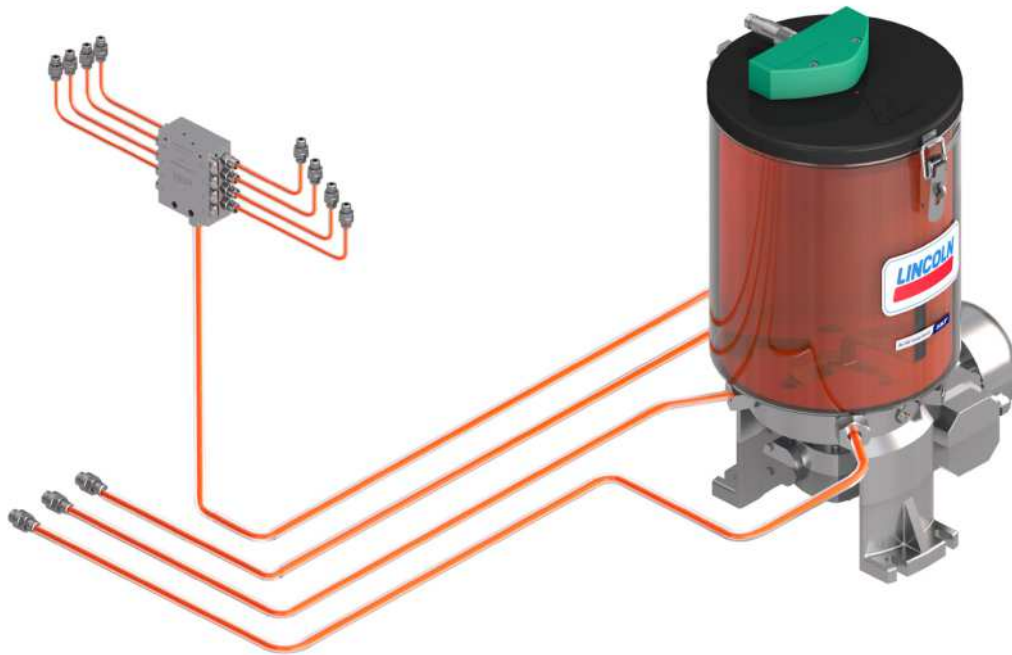


## Applications

SKF Multi-line oil pumps are sophisticated and have a long tradition going back to applications in steam-driven locomotives. Currently, they deliver the superior reliability standard required in high-stressed machines in sensitive areas with extreme vibrations, specially formulated oils, high lubrication point back pressures or certain safety regulations such as:

- Vacuum pumps, compressors (all types) and the hyper-compressor industry
- Combustion engines for valve and cylinder liner lubrication
- Important oil total-loss or very small oil circulation applications
- Rubber-mixing machinery, supply of critical plasticizer oil
- Meet ATEX and API standards in the oil and gas industry

## Multi-line lubrication systems for grease



### System description

SKF multi-line lubrication systems consist of the following components: a pump unit, control and monitoring devices, tubing and fittings. Multi-line pump units supply lubricant to lubrication points without extra metering dividers. Thus, each lubrication point has its own pumping element. The system design is simple, accurate and most reliable.

Multi-line pumps can be actuated mechanically, electrically or hydraulically. The easily exchangeable pumping elements are usually operated by eccentric cam. Depending on the drive speed, gearbox ratio and selected pump element size, a delivery range from almost 0 to 35 cm<sup>3</sup>/min (0 to 2.13 in<sup>3</sup>/min) can be covered. The built-in stirrer mixes the grease (grease softening process), is synchronized with the pump element suction stroke, and assists the heavy lubricant to flow into the suction chamber. This unique concept supplies heavy lubricants usually up to NLGI 3.

An individual lubrication volume setting per pump outlet is possible by selecting pumping elements with different piston diameters and/or stroke settings. The potential numbers of outlets range from 1 to 30.

SKF multi-line grease pumps are designed for demanding applications in nearly all industries. Most pump versions are available with special reservoirs for oil. The P 215 and P 230 pump series enable the use of plasticizer oil for the rubber industry.

#### Advantages:

- Sturdy; durable pump series designed for 24/7 operation
- Simple; continuous lubrication without electrical cycle timers, in most cases
- Versatile; select individual pump element characteristics and reservoir size
- Precise; set the required stroke volume at the pumping element
- Due to the use of a built-in stirrer and broad viscosity range, heaters are not required
- ATEX explosion-proof versions available
- Extra, downstream-located flow control valves or progressive metering devices possible





## Applications

SKF Multi-line grease pumps have a long tradition in the heavy steel industry and meet ATEX standards for gas and dust. Their reliability standard is specified for high-stressed machinery in sensitive and/or dirty areas with pressure requirements up to 350 bar (5 075 psi) such as:

- Construction and mining machinery
- Tunnel-boring machines
- Forging, bending, forming and cutting presses
- Crushers, cranes and conveyors
- Pumps and compressors
- Rubber-mixing machinery
- Water and slurry pumps



SKF



## Overview of multi-line oil pumps and pump units

### Mechanically operated pumps

Product	Outlets Reservoir		Metering quantity per outlet		Operating pressure max		ATEX <sup>1)</sup>	Page	
	l	gal	cm <sup>3</sup> /min	in <sup>3</sup> /min	bar	psi			
SP/G	2 or 4	on request	on request	0,14–2,9	0.008–0.176	3	44	–	12
RA ... U	1–20	on request	on request	0,07–36	0.004–2.196	63	913	• 2)	14
55i	1–14	1–8	0.26–2.1	0,2–12,7	0.012–0.775	400	5 800	–	16
JM	1–28	2–14; any	0.5–3.7; any	0,17–5,0	0.010–0.305	600	8 700	• 3)	18
SP/PFE	1–5	on request	on request	1,0–75,0	0.061–4.576	4 000	58 000	• 3)	28

<sup>1)</sup> on request

<sup>2)</sup> for gas: II 2G c IICT4 Gb; for dust: II 2D c IICT 135°C Db

<sup>3)</sup> for gas: II 2G c IICT4 Gb

### Hydraulically operated pump units

Product	Outlets Reservoir		Metering quantity per outlet		Operating pressure max		Page	
	l	gal	cm <sup>3</sup> /min	in <sup>3</sup> /min	bar	psi		
PD ...	4–10	–	–	0–20	0–1.22	63	913	20
PC	1–28	–	–	1,74–227	0.106–13,852	50	725	22

### Electrically operated pumps

Product	Outlets Reservoir		Metering quantity per outlet		Operating pressure max		ATEX <sup>1)</sup>	Page	
	l	gal	cm <sup>3</sup> /min	in <sup>3</sup> /min	bar	psi			
RA... M/RA B	1–20	0,3–15, any	0.8–4; any	0,07–36	0.004–2.196	60	870	• 2)	24
PC	1–28	–	–	1,74–227	0.106–13,85	50	725	–	22
JM	1–28	2–14; any	0.5–3.7; any	0,15–7,95	0.009–0.485	600	8 700	• 3)	18
SP/PFE	1–5	on request	on request	1,0–75,0	0.061–4.576	4 000	58 000	• 3)	28

<sup>1)</sup> on request

<sup>2)</sup> for gas: II 2G c IICT4 Gb; for dust: II 2D c IICT 135 °C Db

<sup>3)</sup> for gas: II 2G c IICT4 Gb

## Pump

# SP/G



### Product description

The SP/G rotary-driven, multi-line piston pump features a fixed internal gear ratio of 33:1. Its compact pump design with only two rotating/movable parts is slide operated and requires no rubber seals, springs or additional non-return valves. The SP/G is available as a self-priming pump or as a pump with priming pressure. Designs with two or four outlets are available. The two-outlet version is offered in two different piston sizes respective of delivery volumes. One vibration-proof, stroke-regulating screw per outlet pair enables fine-tuned stroke settings.

### Features and benefits

- Virtually maintenance-free, vibration-proof, 24/7 design
- Designed for high ambient temperatures and all standard lubrication oils
- Machine operated; no under- or over-lubrication
- Oil supply from machine sump or from existing oil-circulation system
- Adjustable output
- Available for two drive directions

### Applications

- Marine industry; inlet valve seat lubrication for powerful four-stroke engines
- General machine-driven applications

### Technical data

Function principle	mechanically operated piston pump
Metering quantity <sup>1)</sup>	piston K6: max. 0,042 cm <sup>3</sup> /stroke max. 0.0026 in <sup>3</sup> /stroke piston K7: max. 0,058 cm <sup>3</sup> /stroke max. 0.0035 in <sup>3</sup> /stroke
Group size	2, 4, 6, 8, 10 flow meters
Lubricant	mineral, synthetic, environmentally safe oil; up to 12 to 800 mm <sup>2</sup> /s
Operating pressure	3 bar; 43 psi, plus inlet pressure
Inlet pressure	0 or 2 to 6 bar, 0 or 30 to 85 psi
Operating temperature	max. 100 °C; 212 °F
Outlets	2 or 4
Internal ratio	30:1
Drive speed	300-3000 min <sup>-1</sup>
Drive direction	left/right
Connection in/outlet	for tube Ø 4 and 6 mm OD
Dimensions	2 outlets: 56 × 88,5 × 44 mm 2.22 × 3.5 × 1.8 in 4 outlets: 69 × 85 × 45 mm 2.7 × 3.4 × 1.8 in
Mounting position	any
Options	customized pre-set volumes

<sup>1)</sup> With priming pressure increased delivery volume; see technical information

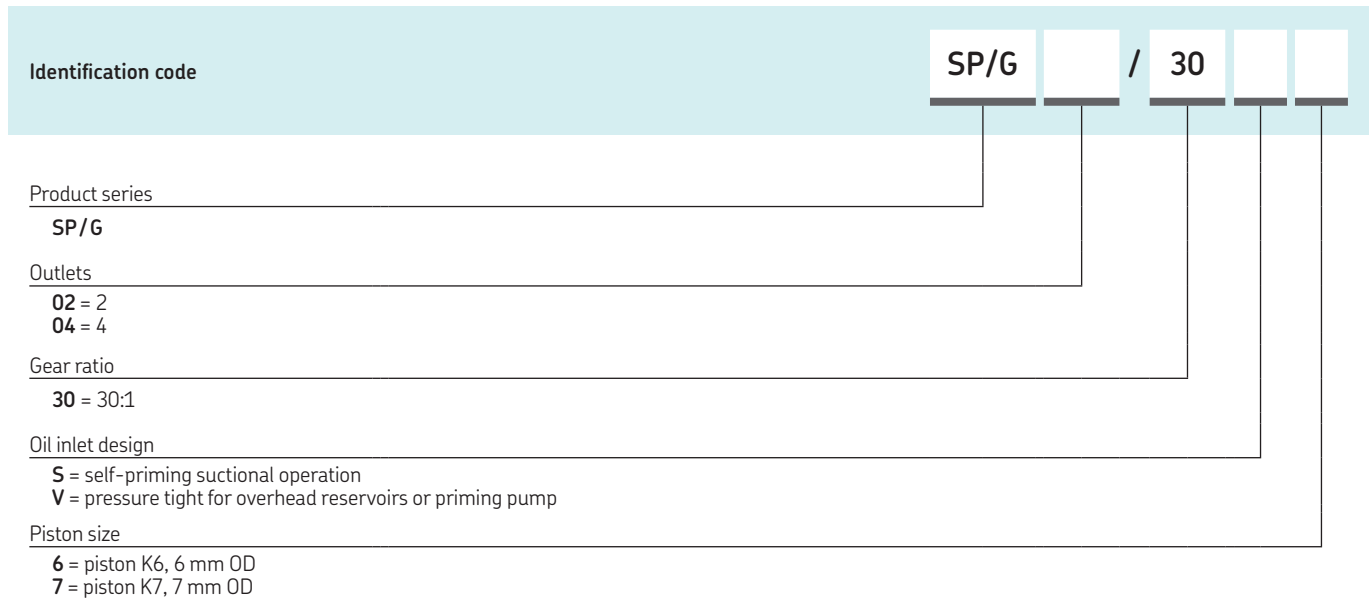


### NOTE

For further technical information, technical drawings, accessories, spare parts or product function descriptions, see the following publication available on [SKF.com/lubrication](http://SKF.com/lubrication): **951-170-219-EN**

# Pump

## SP/G



Pump units for oil

**SP/G tube connections**

Order number	Description
<b>Inlet screw unions</b>	
406-001	double-tapered ring for tube Ø 6 mm OD
406-002	socket union M10×1 – tube Ø 6 mm OD
<b>Outlet screw unions</b>	
404-001	double-tapered ring for tube Ø 4 mm OD
404-002	socket union M8×1 tube Ø 4 mm OD

**SP/G coupling element with snap ring**

Order number	Description	Item
44-1202-2038	coupling element	1
44-0606-6302	snap ring for coupling element	2



## Pump

# RA ... U



### Product description

The RA multi-line pump is a unique radial piston pump with stackable pump elements. The modular pump design allows up to five pump elements, each with one, two or four outlets. A later outlet reduction or outlet extension is thus possible. The displacement of all outlets from a pump element is adjustable by a common setting device, setting range 33–100%. Several different mechanical or electric motor drives are available.

### Features and benefits

- Modular pump-to-point solution for 1 to 20 lubrication points
- Depending on drive speed respective of selected drive ratio, RA pumps cover feed rates of some droplets until 36 cm<sup>3</sup>/min (2.2 in<sup>3</sup>/min)
- Drive direction left or right
- Compatible with mineral- and synthetic-based oil
- Vibration-proof, marine and ATEX versions available
- Supplies several different lubrication zones, lubrication points or chain pins

### Applications

- Gas compressors and large pumps
- Economic power unit for sealing oil systems
- Marine, valve-seat lubrication on large four-stroke engines

### Technical data

Function principle	radial piston pump with stackable pumping elements
Operating temperature	-15 to 80 °C, +5 to +176 °F
Operating pressure	10 to 63 bar, 145 to 915 psi
Outlets	depending on drive speed and oil viscosity 1 to 20 (max. 5 elements with 1, 2 or 4 outlets)
Lubricant	mineral- and synthetic-based oil, 25 to 2 500 mm <sup>2</sup> /s
Metering quantity per outlet	0,007–0,02 cm <sup>3</sup> /revolution 0,0004–0,0012 in <sup>3</sup> /revolution
Output per outlet	0,07–36 cm <sup>3</sup> /min 0,004–2,2 in <sup>3</sup> /min
Internal ratio	1:1, 5:1, 10, 5:1, 15:1, 25:1, 75:1, 125:1
Dimensions	min. 113 × 54 × 54 mm max. 220 × 54 × 54 mm min. 4.45 × 2.13 × 2.13 in max. 8.68 × 2.13 × 2.13 in
Drive speed	10 to 1 800 min <sup>-1</sup>
Protection class	min. IP 55
Mounting position	any
Options	with manual hand crank for pre-lubrication, customized pre-set volume version with two inlet sections for two different oil types

### NOTE

For further technical information, technical drawings, accessories, spare parts or product function descriptions, see the following publications available on SKF.com/lubrication:

**11103 EN, 951-170-230 EN**

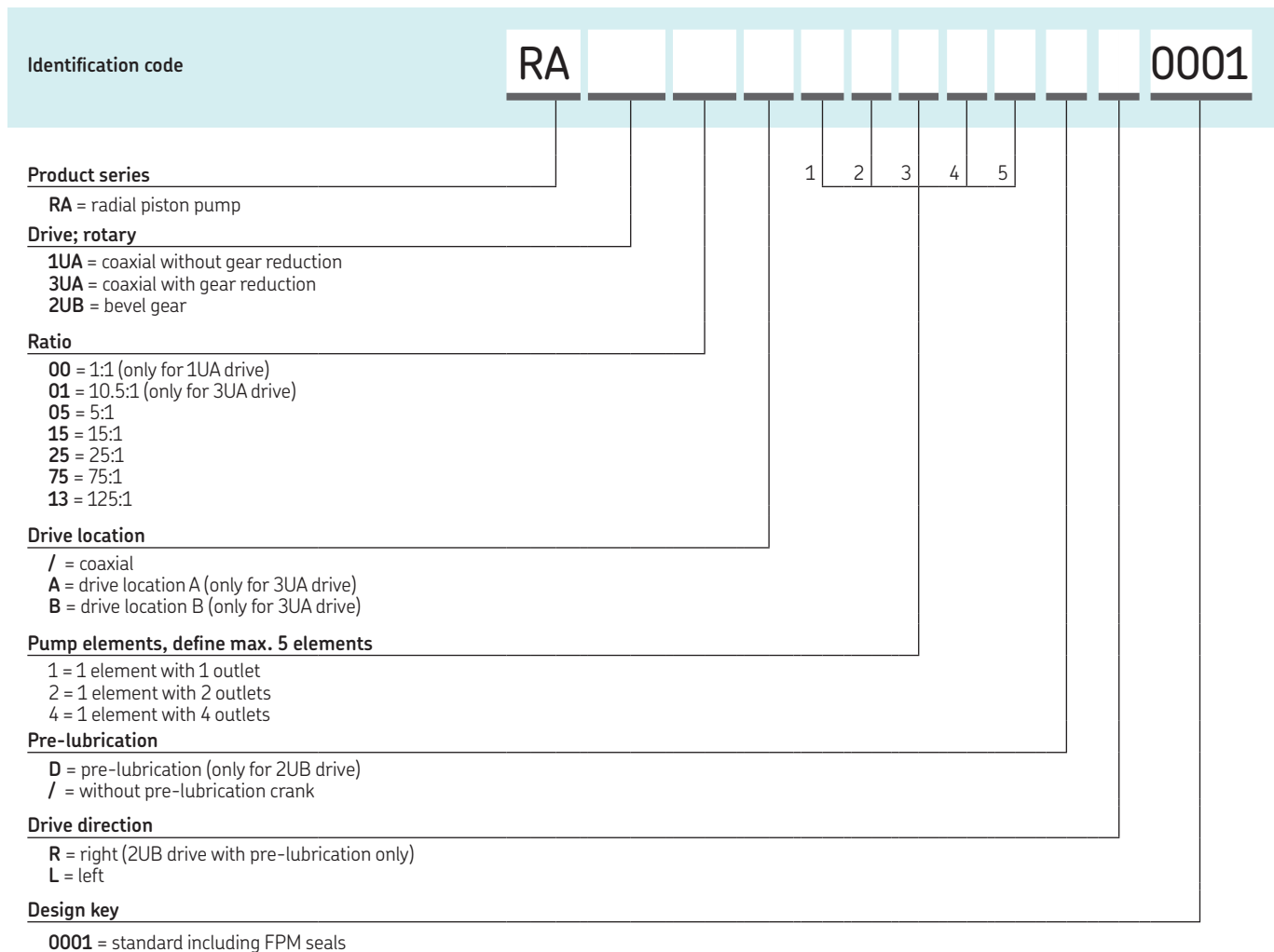
CAD data



[skf-lubrication.partcommunity.com/3d-cad-models/](http://skf-lubrication.partcommunity.com/3d-cad-models/)

# Pump

## RA ... U



**RA pump elements**

Order number	Description
24-1557-3520	pump element, with 1 outlet
24-1557-3521	pump element, with 2 outlets
24-1557-3522	pump element, with 4 outlets

# Pump

## 55i



### Product description

The positive-displacement, single-action 55i pumps are fully adjustable by means of manually modifying the angle of the rocker arm to the cam. The pump operation is a two-stage process. As the camshaft rotates, the cam mechanically forces the pump plunger forward, displacing a measured volume of oil. On the second or return stroke, a spring assists the plunger to return for prime. All pump elements are designed with a pushbutton for manual pre-lubrication.

### Features and benefits

- Easy adjustment of flow rate
- Pushbutton for pre-lubrication and system de-aeration
- Modular box lubricator mounting for ease of maintenance
- Pumps with suction tube for oil suction from the lubricator box or with direct feed by overhead reservoir
- With or without sight glass for visual flow indication
- For operating viscosity up to 1 700 mm<sup>2</sup>/s

### Applications

- Gas engines
- Reciprocating compressors
- High-pressure oil, total-loss lubrication systems



### Technical data

Function principle	camshaft-operated piston pump
Metering quantity	K 3/16: 0,20 cm <sup>3</sup> , 0.0122 in <sup>3</sup> K 1/4: 0,302cm <sup>3</sup> , 0.0184 in <sup>3</sup> K 3/8: 0,68 cm <sup>3</sup> , 0.0415 in <sup>3</sup>
Outlets	1 to 7
Lubricant	mineral- or synthetic-based oil, viscosity max. 1 700 mm <sup>2</sup> /s
Operating pressure	K 3/8: max. 240 bar, 3 500 psi K 1/4: max. 400 bar, 6 000 psi
Operating temperature	-20 to +70 °C, -4 to + 158 °F
Reservoir	1,4 to 3,8 l, 0.37 to 1.0 gal depends on outlet quantity
Internal ratio	37.5:1; 60:1; 112.5:1
Drive speed	<20 min <sup>-1</sup> ; depends on box lubricator
Electrical motor drives	for pumps with 112.5:1 and 300:1 ratio only
Connection outlet	1/8 NPTF
Dimensions	min. 127 × 88 × 35 mm max. 127 × 132 × 35 mm min. 5 × 3 15/32 × 1 3/8 in max. 5 × 5 3/16 × 1 3/8 in outer parts when installed in box lubricator
Mounting position	vertical
Options	pumping elements without sight glass lubrication sentries to control the oil-level and camshaft rotation, oil-level regulator

### NOTE

For further technical information, technical drawings, accessories, spare parts or product function descriptions, see the following publication available on [SKF.com/lubrication](http://SKF.com/lubrication):  
**FORM 442834 EN**



# Pump

## 55i

**Identification code** 55i

**Product series**  
55i = camshaft-operated piston pump

**Reservoir**  
3 = 1,4 l, 3 pint, max. 3 single pumps  
4 = 1,9 l, 4 pint, max. 5 single pumps  
8 = 3,8 l, 8 pint, max. 7 single pumps

**Drive / gear ratio / available reservoir size / speed**

Designation	Drive	Ratio	Reservoir		Speed
			l	pt	
A = rotary drive, internal gear and ratchet	right or left	37,5:1	1,9	4.8	700
B = internal ratchet and external lever	right or left	75 teeth	1,9	4.8	1100
			3,8	9.6	
C = internal super gear, pulley, machine drive	right or left	112,5:1	1,9	4.8	1200
			3,8	9.6	
D = external gear drive, specific OEM frame	right or left	60:1	1,9	4.8	1200

### Single Pumps

Designation	Piston Ø		Inlet	Sight glass	Operating pressure max.		Metering quantity per stroke max.			Order number spare part
	mm	inch			bar	psi	drops	cm <sup>3</sup>	in <sup>3</sup>	
1 = vacuum feed	6,4	1/4	suction tube •	•	400	6 000	9	0,302	0.0184	880550
2 = vacuum feed	9,5	3/8	suction tube •	•	240	3 500	21	0,680	0.0415	880560
3 = pressure inlet, manifold feed	4,8	3/16	1/8 NPTF •	•	400	6 000	6	0,200	0.0122	880553
4 = pressure inlet, manifold feed	6,4	1/4	1/8 NPTM •	•	400	6 000	9	0,302	0.0184	880551
5 = pressure inlet, manifold feed	9,5	3/8	1/8 NPTM •	•	240	3 500	21	0,680	0.0415	880561
6 = direct feed	6,4	1/4	1/8 NPTF -	-	400	6 000	9	0,302	0.0184	880552
7 = direct feed	9,5	3/8	1/8 NPTF -	-	240	3 500	21	0,800	0.0488	880554

### 55i accessories

Description	Order number
lubricator flow switch; monitors model 55i lubricant flow	880463
lube sentry; monitors camshaft rotation and reservoir level	880555
lube sentry; same as model number: 880555, except suction is 1/2 inch shorter, for pre-warning	880556
oil-level regulator; automatically fills lubricator reservoir from header reservoir	880496
cover plate; gasket	350654
cover plate assembly	250132
cover plate screws	70224
armored sight glass kit	276517

## Pump unit

# JM



### Product description

The multi-line JM oil lubrication pump is a high-pressure pump that provides a maximum continuous operating pressure of 600 bar (8 700 psi). Its modular design features unique, adjustable, dual-piston pumping elements (separate dosing and high-pressure booster piston) in combination with an optical drip indicator that delivers outstanding reliability.

Depending on the application, the pump can be machine or electrically driven. The JM pump is available in a pressure-tight design that is suitable for use with overhead lubrication oil tanks. It can deliver all mineral oils with an operating viscosity between 25 and 3 000 mm<sup>2</sup>/s.

### Features and benefits

- Designed for 24/7 operation
- Three piston sizes cover output from 0,17 to 5,0 cm<sup>3</sup>/min (0.01 to 0.29 in<sup>3</sup>/min) per outlet
- Individual outlet settings between 25 and 100%
- Pressure-tight design available
- Can be monitored according to API 618 standards
- Most reliable replacement for all standard box lubricators

### Applications

- Reciprocating gas compressors, mainly in an ATEX environment
- Pump-to-point lubrication of packings and cylinders
- Petro-chemical and food and beverage industry

### Technical data

Function principle	cam-operated piston pump in modular design, rotary or electrically operated
Metering quantity per stroke	0,017–0,2 cm <sup>3</sup> , 0.001–0.012 in <sup>3</sup>
Outlets	1 to 28
Lubricant	mineral- or synthetic-based oil, 25 to 3000 mm <sup>2</sup> /s
Operating pressure	max. 600 bar, 8 700 psi
Operating temperature	0 to +40 °C, +32 to +104 °F
Protection class	min. IP 55F, ATEX available
Reservoir	per module 2 l, 0.5 gal
Internal ratio	1:1, 35.1:1, 62.8:1, 83.2:1, 100.9:1, 125.7:1
Drive speed main shaft n <sub>2</sub>	10 to 25 min <sup>-1</sup>
Metering quantity per outlet	0,17–5,0 cm <sup>3</sup> /min, 0.01–0.305 in <sup>3</sup> /min
Drive	3-phase motor or mechanical
Outlet connections	G 1/4, tube Ø 6 or 8 mm OD
Dimensions	min. 315 × 200 × 260 mm max. 1 455 × 200 × 260 mm min. 12.4 × 7.87 × 10.24 in max. 57.3 × 7.87 × 10.24 in
Mounting position	horizontal, level surface
Options	pressure-tight design for overhead reservoirs, additional oil reservoir with heater and oil-level sensor, camshaft rotation sensor, oil flow pulse transmitters in ATEX

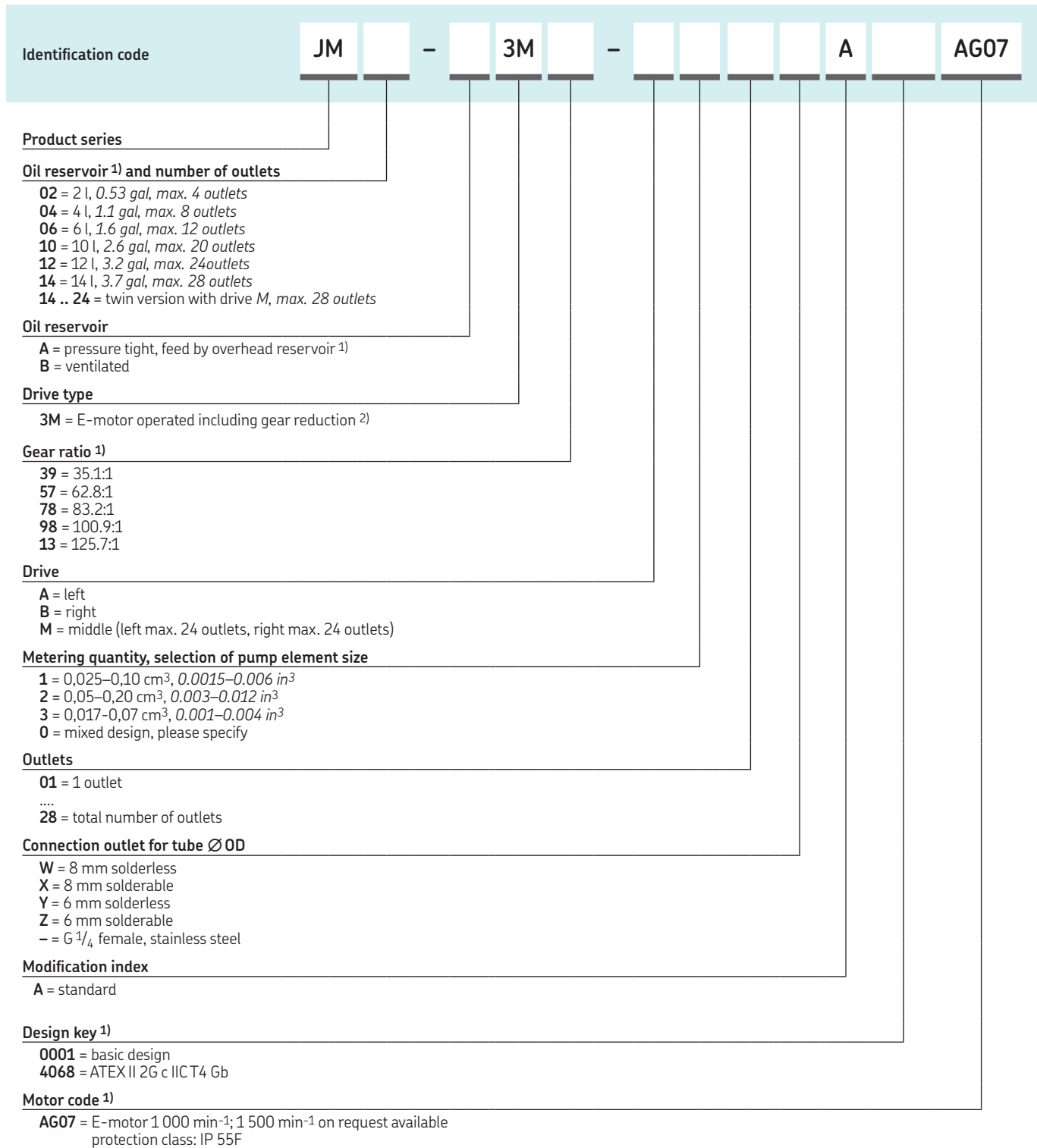
### NOTE

For further technical information, technical drawings, accessories, spare parts or product function descriptions, see the following publication available on [SKF.com/lubrication](http://SKF.com/lubrication):

**951-170-019; 951-180-073; 14600; 1-3007**

# Pump unit

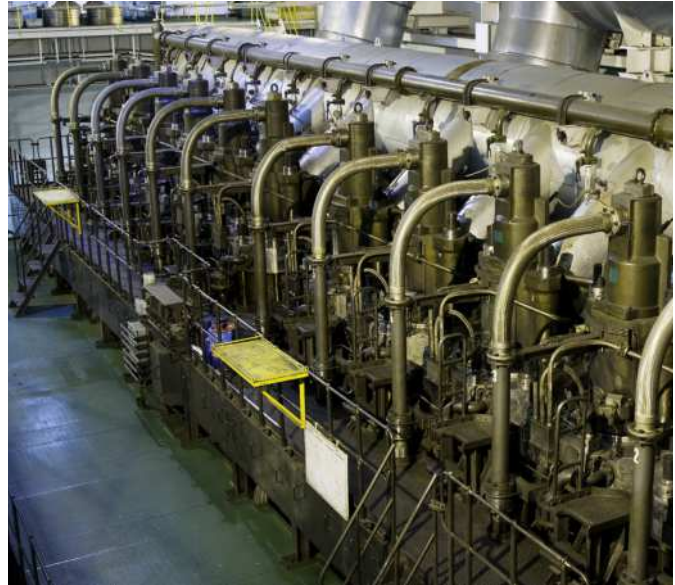
## JM



<sup>1)</sup> For supply via additional or overhead reservoir (max. installation height of 10 m; 5 m in conjunction with an additional reservoir in steel design)  
<sup>2)</sup> For direct machine-operated versions, please consult technical support

## Pump unit

# PDYY, PDYC and PDYS



### Product description

Designed for high-speed cylinder lubrication on two-stroke engines, the PDY... pumps use an existing oil supply system or drive pump unit. Engine electronics trigger the pre-loaded pumps by activating the solenoid valve. The exact stroke volume can be synchronized with the moving engine piston, and ignition timing can be adjusted to reach various piston stress areas with oil. PDYY and PDYC pumps feature a baseplate configuration with 6 or 8 outlets. PDYS pumps have double-stroke functionality for use on small-bore engines with only 4 outlets per cylinder.

### Features and benefits

- Accurate, timed oil metering quantities within a millisecond
- Load-dependent, lubrication standard
- Modular design for easy assembly and service
- Prevents over-lubrication, deposits, excess smoke and CO<sub>2</sub>
- Provides up to 40% oil savings
- Retrofit solutions available

### Applications

- Marine industry
- General industry
- Chains or compressors

### Technical data

Function principle	electrically/hydraulically operated multi-outlet pump
Metering quantity	40 to 310 mm <sup>3</sup> 0.0024 to 0.019 in <sup>3</sup>
Outlets	PDYS: 4 PDYY, PDYC: 6 or 8
Lubricant	mineral-based oil up to SAE50; 25 to 2000 mm <sup>2</sup> /s
Drive oil	PDYS: supply unit with lubricating oil PDYY, PDYC: mineral-based system oil up to SAE30
Operating pressure	45 to 55 bar; 650 to 800 psi
Operating temperature	+5 to 70 °C; +41 to 158 °F
Injection time	PDYS, : <5 ms; PDYY, PDYC: <8 ms
Power supply	24 V DC
Protection class	IP 65
Mounting position	PDYY/C/S outlets on top
Dimensions	max. 270 × 261 × 180 mm max. 10.6 × 10.3 × 7.1 in
Options	oil drive units with redundant pumps according to the marine standard



### NOTE

For further technical information, technical drawings, accessories, spare parts or product function descriptions, see the following publications available on [SKF.com/lubrication](http://SKF.com/lubrication):

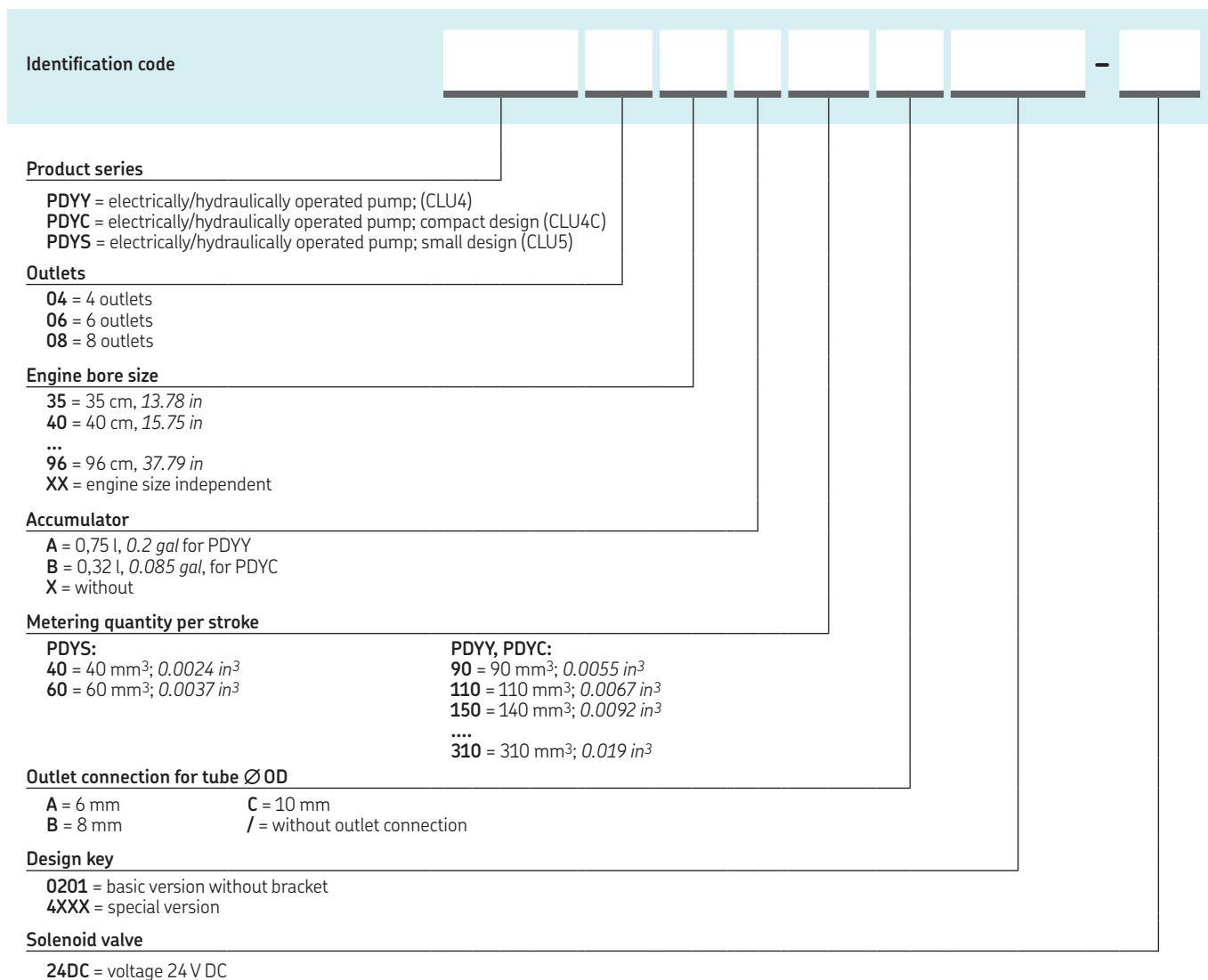
PDYY; System CLU4: **951-130-314 EN**

PDYC; System CLU4C: **951-160-012 EN**

PDYS; System CLU5: **951-170-210 EN**

## Pump unit

# PDYY, PDYC and PDYS

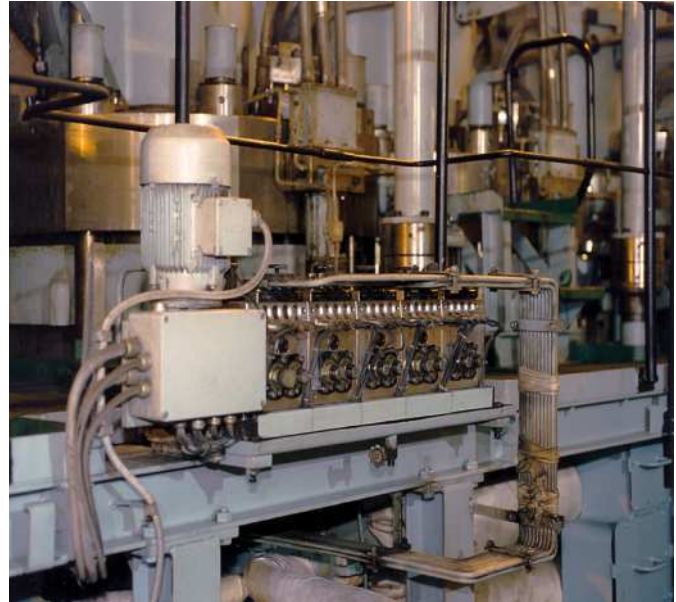


### PDYY, PDYC and PDYS accessories

Order number	Pump	Description
161-140-050+924	PDY/Y/C	solenoid valve
161-140-056+924	PDYS	solenoid valve
24-1884-2324	PDY/Y/C	pressure sensor
24-1884-2397	PDYS	pressure sensor
24-2578-2041	PDYC	accumulator: 0,32 l; 0.085 gal
24-2578-2044	PDYY	accumulator: 0,75 l; 0.2 gal

## Pump unit

# PC



### Product description

Designed for total-loss lubrication systems with significant oil volume requirements, the PC pump unit features from 1 to 28 outlets. Delivery volume can be sub-divided using a progressive-type metering device, enabling the pump to cover up to 224 lubrication points. This all-in-one pump unit consists of a frequency-controlled E-motor with gear reduction, pump modules with pumping elements for six pre-defined settings, optical/electrical flow controls, additional sensors for low level and optional drive speed, safety valves and connections for heating oil. Its integrated shut-off valves, one per module, allow the use of different lubricating oil and/or pumping element replacement during operation. The terminal box with pre-wired sensors contains a pushbutton for pre-lubrication.

### Features and benefits

- Accurate, robust lubrication pump assembly
- Load-dependent, variable-speed operation as standard
- E-motor with electrically operated air fan enables wide speed range
- Ease of operation, maintenance and assembly
- Assembly brackets for hanging or standing position
- 24/7 operation in arctic and tropical conditions

### Applications

- Marine industry

### Technical data

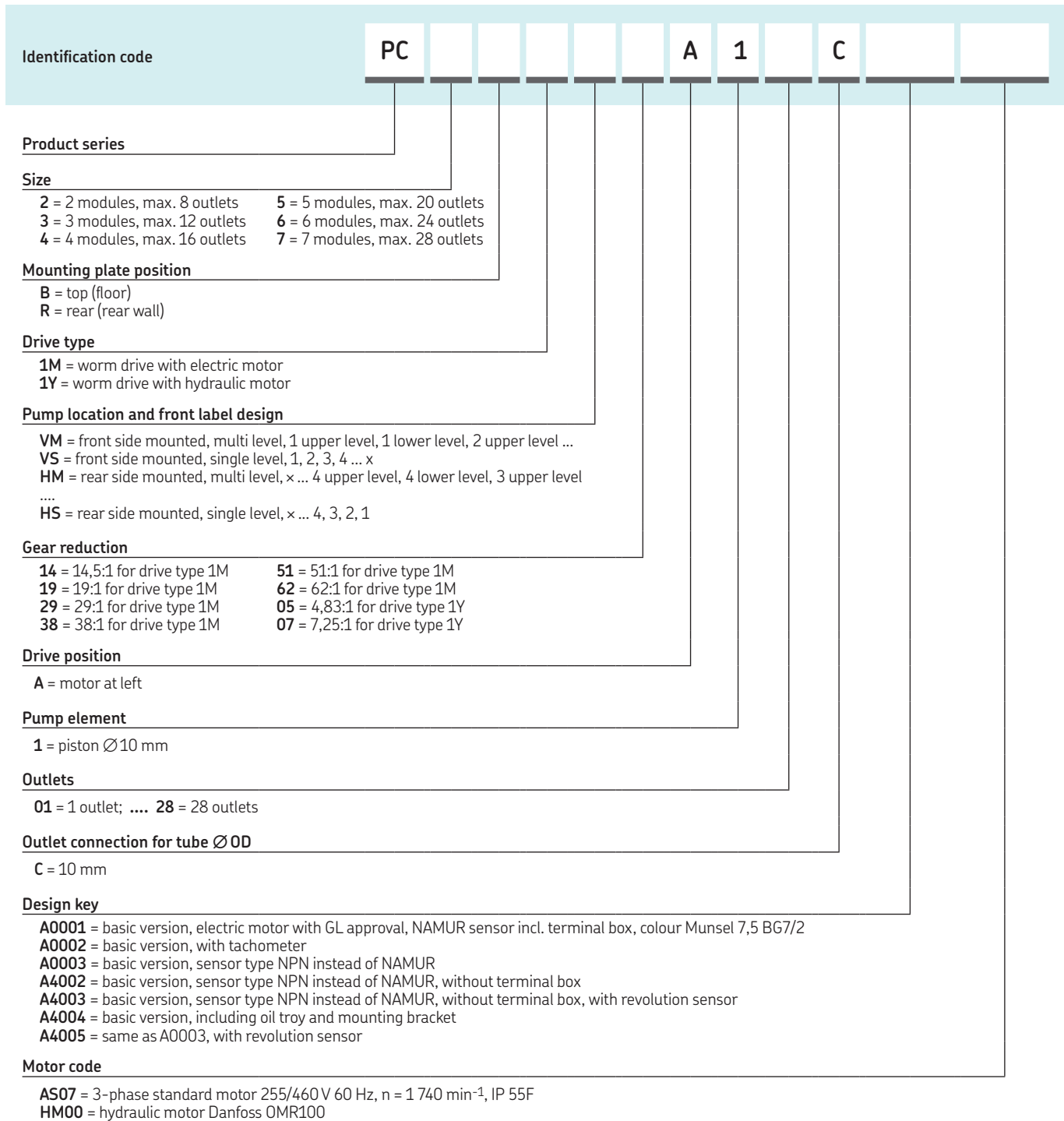
Function principle	modular electrically or hydraulically operated piston pump unit in marine standard, with non-flow sensors and oil-heating connections
Metering quantity per outlet	1,74–227 cm <sup>3</sup> /min, 0.1–14 in <sup>3</sup> /min
Outlets	1 to 28
Lubricant	mineral oil up to SAE 5012 to 2 000 mm <sup>2</sup> /s
Lubricant supply	by overhead reservoir, max. inlet pressure 2 bar, 30 psi
Operating pressure	max. 50 bar, 725 psi
Operating temperature	+5 to 45 °C, +41 to 113 °F
Internal ratio	4.83; 14.5; 19; 29; 38; 51; 62 : 1
Output per Outlet	0,27–1,1 cm <sup>3</sup> , 0.016–0.067 in <sup>3</sup>
Electrical connection Sensor	24 V DC
Hydraulic drive option	100 cm <sup>3</sup> /revolution, 60–360 min <sup>-1</sup> for i = 4.81:1 and 7.25:1 only
Protection class	IP 55F
Connection	inlet: G 1 1/4 outlet: G 1/4 for tube Ø10 mm OD
Dimensions	min. 610 × 513 × 320 mm max. 610 × 1 580 × 320 mm min. 24 × 20.2 × 25.6 in max. 24 × 62.2 × 25.6 in
Mounting position	horizontal
Options	version with mainshaft revolution; sensor; sensors NPN instead of NAMUR

### NOTE

For further technical information, technical drawings, accessories, spare parts or product function descriptions, see the following publication available on [SKF.com/lubrication](http://SKF.com/lubrication):  
**951-170-208**

# Pump unit

## PC



**PC accessories**

Order number	Description
24-0404-2493	gasket set with seals
24-1557-3560	spare pumping element
24-1751-2760	filter assembly, 100 µm
24-0651-3519	filter element only

## Pump unit

# RA ... M/RA B



### Product description

The RA radial piston pump features a modular design that enables use of up to five stackable pump elements, and outlet reduction or expansion can be accomplished easily. Displacement of all outlets from a pump element is adjustable by a common setting device and features a setting range of 33-100%. The RAB series pump have a pre-assembled oil reservoir.

### Features and benefits

- Pump-to-point solution for 1 to 20 lubrication points
- Covers feed rates of certain droplets 36 cm<sup>3</sup>/min
- Compatible with mineral and synthetic oils
- Vibration-proof, marine and ATEX versions available

### Applications

- Gas compressors and large pumps
- General industry, total loss, sealing and small oil-circulation applications
- Marine



#### NOTE

For further technical information, technical drawings, accessories, spare parts or product function descriptions, see the following publications available on [SKF.com/lubrication](http://SKF.com/lubrication):

**11103 EN, 951-170-230 EN**



CAD data

[skf-lubrication.partcommunity.com/3d-cad-models/](http://skf-lubrication.partcommunity.com/3d-cad-models/)

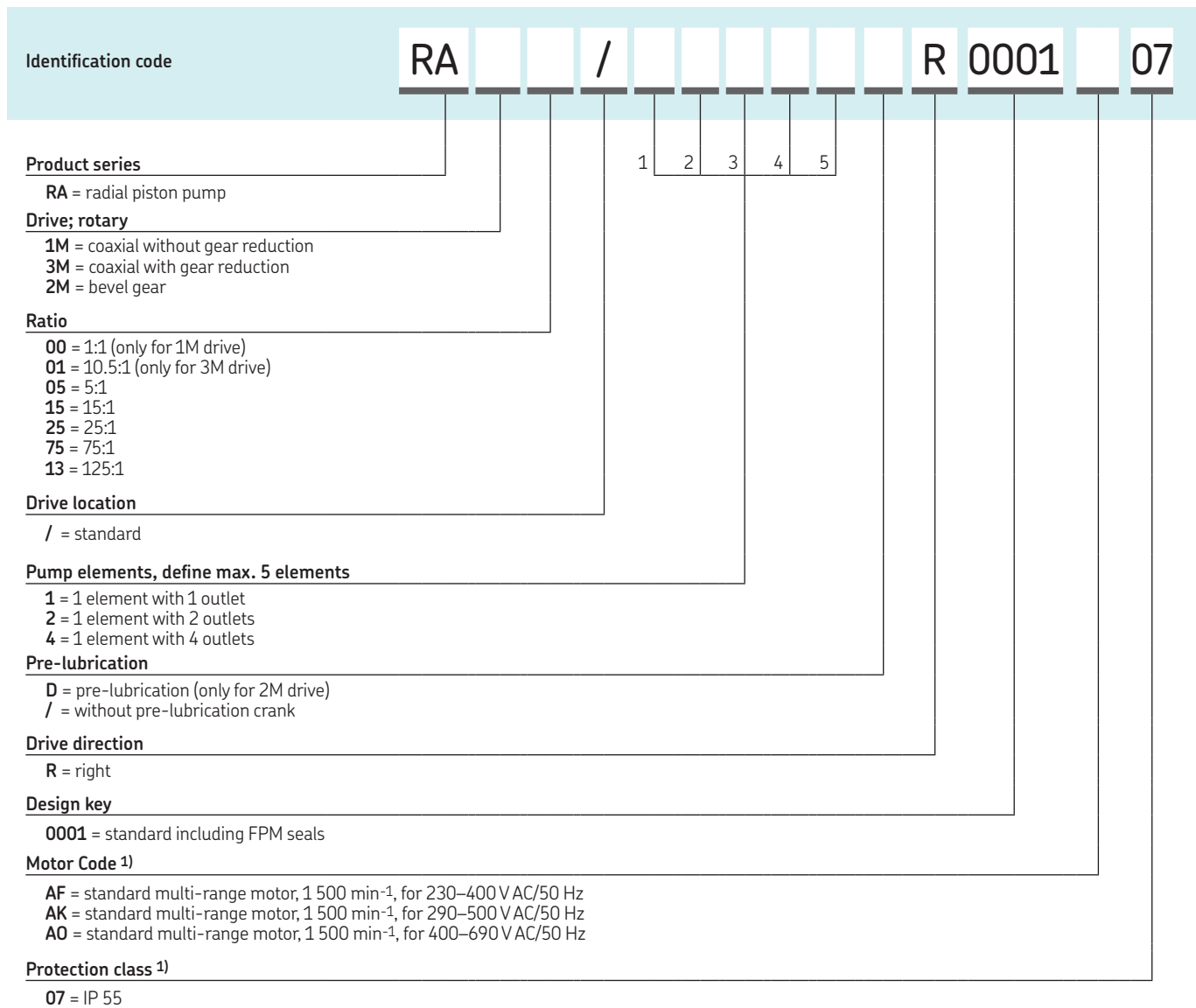
### Technical data

Function principle	radial piston pump with stackable pumping elements, mechanically or electrically operated
Outlets	1 to 20 (max. 5 elements with 1, 2 or 4 outlets)
Metering quantity per outlet	0,007–0,02 cm <sup>3</sup> /revolution 0,0004–0,001 in <sup>3</sup> /revolution
Output per outlet	0,07–36 cm <sup>3</sup> /min 0,004–2,2 in <sup>3</sup> /min
Internal ratio	1:1, 5:1, 10, 5:1, 15:1, 25:1, 75:1, 125:1
Lubricant	mineral- and synthetic-based oil, 25 to 2500 mm <sup>2</sup> /s
Reservoir	3, 7, 15 l and more, 0,8, 1,8, 4 gal and more
Operating pressure	10 to 63 bar, 145 to 913 psi depending on drive speed and oil viscosity
Operating temperature	–15 to 80 °C, +5 to 176 °F electrically operated: –15 to 40 °C; +5 to +104 °F
Protection class	min. IP 55
Drive speed	10 to 1 800 min <sup>-1</sup>
Connection in/outlet	G 1/8
E-motor drive	with 3-phase motor
Drive direction	left/right
Dimensions	without reservoir: min. 113 × 54 × 54 mm max. 220 × 54 × 54 mm min. 4.45 × 2.13 × 2.13 in max. 8.68 × 2.13 × 2.13 in with reservoir: min. 400 × 333 × 140mm max. 650 × 441 × 288 mm min. 15.7 × 13.1 × 5.5 in max. 25.6 × 17.4 × 11.3 in
Mounting position	any, RAB versions vertical
Options	with manual hand crank for pre-lubrication, customized pre-set volume, reservoir options with further accessories



# Pump unit

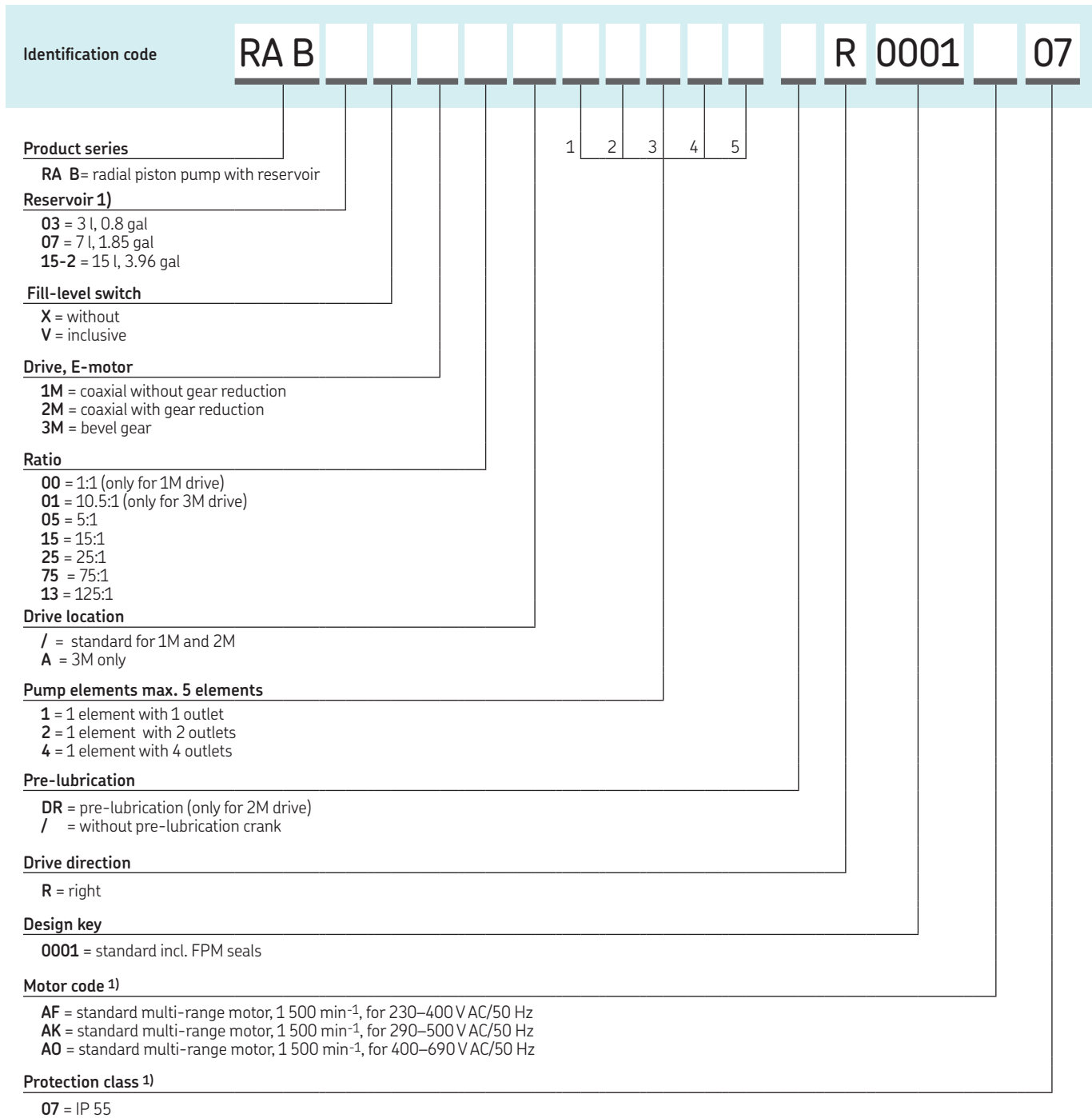
## RA ... M



1) further models on request

# Pump unit

## RAB



1) further models on request

## Pump unit

# RA ... accessories

### RA ... U drive assembly

Description	Order number
coaxial 1:1	24-0701-3000
coaxial 5:1	24-0701-3070
coaxial 5:1 with pre-lubrication	24-0701-3080
bevel gear, 10,5:1, position A	24-0701-3001
bevel gear, 10,5:1, position B	24-0701-3002
coaxial 15:1	24-0701-3071
coaxial 15:1 with pre-lubrication	24-0701-3081
coaxial 25:1	24-0701-3072
coaxial 25:1 with pre-lubrication	24-0701-3082
coaxial 75:1	24-0701-3073
coaxial 75:1 with pre-lubrication	24-0701-3083
coaxial 125:1	24-0701-3074
coaxial 125:1 with pre-lubrication	24-0701-3084
spacer ring, only oil, for ratio 1:1	24-1721-2000
spacer ring, only grease	24-1721-2001

### RA tie rod <sup>1)</sup> for ratio 1:1; 10,5:1; 15:1; 25:1; 75:1

Description	Order number
for 1 pump element	44-0717-2060
for 2 pump elements	44-0717-2061
for 3 pump elements	44-0717-2062
for 4 pump elements	44-0717-2063
for 5 pump elements	44-0717-2064
washer, 6.4 DIN125 <sup>1)</sup>	DIN125-B6.4-ST
nut <sup>1)</sup>	DIN934-M6-8

### RA pump elements for oil and grease

Description	Order number
for 1 outlet	24-1557-3520
for 2 outlets	24-1557-3521
for 4 outlets	24-1557-3522

### RA ... M drive assembly

Description	Order number
coaxial 1:1	24-0701-3004
coaxial 5:1	24-0701-3035
coaxial 5:1 with pre-lubrication	24-0701-3036
bevel gear, 10,5:1, position A	24-0701-3003
bevel gear, 10,5:1, position B	24-0701-3004
coaxial 15:1	24-0701-3037
coaxial 15:1 with pre-lubrication	24-0701-3038
coaxial 25:1	24-0701-3039
coaxial 25:1 with pre-lubrication	24-0701-3040
coaxial 75:1	24-0701-3041
coaxial 75:1 with pre-lubrication	24-0701-3042
coaxial 125:1	24-0701-3043
coaxial 125:1 with pre-lubrication	24-0701-3044
spacer ring, only oil, for ratio 1:1	24-1721-2000
spacer ring, only grease	24-1721-2001

### RA tie rod <sup>1)</sup> for ratio 5:1; 125:1

Description	Order number
for 1 pump element	44-0717-2069
for 2 pump elements	44-0717-2070
for 3 pump elements	44-0717-2071
for 4 pump elements	44-0717-2072
for 5 pump elements	44-0717-2073
washer, 6.4 DIN125 <sup>1)</sup>	DIN125-B6.4-ST
nut <sup>1)</sup>	DIN934-M6-8

### RA accessories

Description	Order number
cover	24-0413-3490
cap nut	95-0006-0917
hand crank	24-0801-2070

<sup>1)</sup> two required per pump

## Pump unit

# SP/PFE



### Product description

The SP/PFE multi-line pump is designed for very high system pressures. Its drive parts are located in the pump housing and are pre-filled with high-viscosity gear oil. The special, guided-roller tappet drives the pump element arrangement in a 100% axial direction and eliminates side forces. Each exchangeable pumping element contains a precise, volume-regulating device with scaling, a high-pressure, non-return valve and a high-pressure outlet adapter for up to 4 000 bar (58 000 psi).

Due to the pump's unique design, lubrication oil can be connected from an overhead reservoir directly to the pump elements without the use of additional oil-level controllers.

### Features and benefits

- Designed for continuous 24/7 operation
- Modular pump design enables use of up to five pumping elements
- Pressure-tight design; suitable for overhead reservoir connection
- Rack arrangement with additional pumps, filter and flow control equipment available

### Applications

- Petro-chemical industry



### Technical data

Function principle	Rotary-operated, cam-operated piston pump; with pressure-tight design for overhead reservoirs
Metering quantity per outlet	0–0,14 cm <sup>3</sup> /stroke 0–0.0085 in <sup>3</sup> /stroke
Outlet	1 to 5
Lubricant	mineral- or synthetic-based oil, < 230 mm <sup>2</sup> /s
Operating pressure	max. 4 000 bar; 58 000 psi
Operating temperature	+15 to +40 °C, +59 to 104 °F
Internal ratio	1:1
Material	3-phase motor and flanged gearbox available
Drive speed main shaft <sup>1)</sup>	10 to 500 min <sup>-1</sup>
E-motor drive <sup>1)</sup>	10 to 500 min <sup>-1</sup>
Connection outlet	gland and sleeve for pipe 3/8 × 1/8
Connection inlet/leak oil outlet	M 14 × 1,5
Dimensions	287 × 350 × 130 cm 512 × 350 × 130 cm 11.3 × 13.8 × 5.1 in 20.15 × 13.8 × 5.1 in
Mounting position	vertical, pump body upright
Options	Available as ATEX package with E-motor drive arrangement, rack mounting, flow monitoring devices

<sup>1)</sup> please specify your requirements

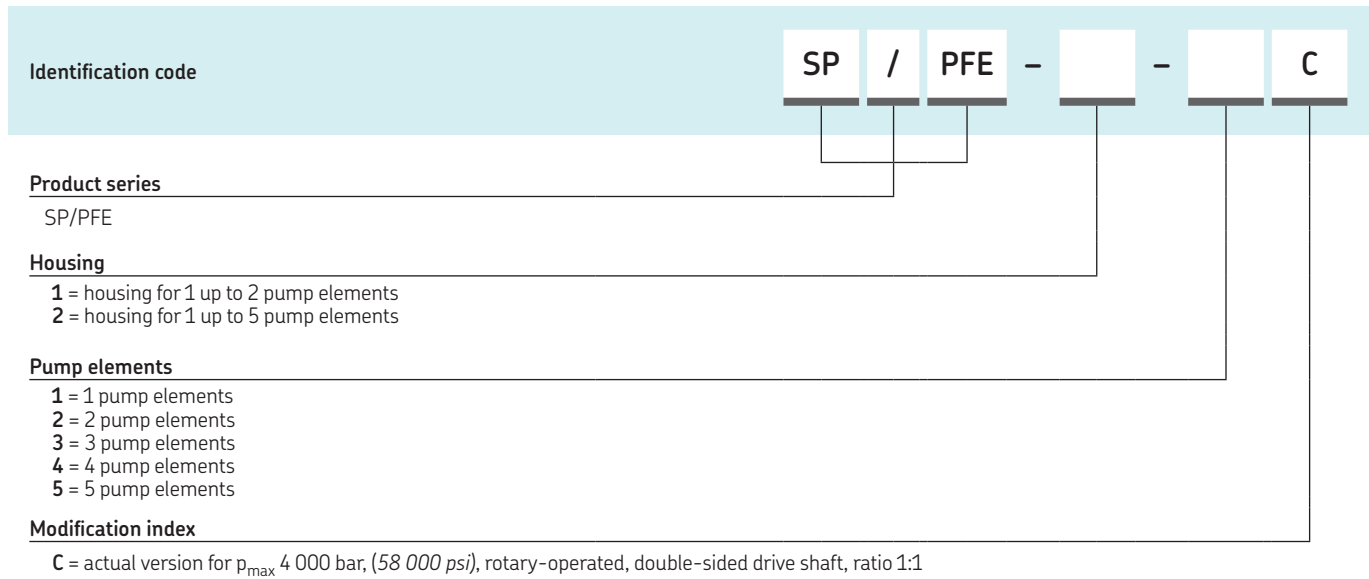
### NOTE

For further technical information, technical drawings, accessories, spare parts or product function descriptions, see the following publications available on [SKF.com/lubrication](http://SKF.com/lubrication):

**14600EN**

# Pump unit

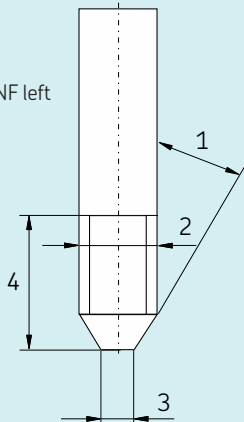
## SP/PFE



### Accessories SP/PFE pump outlets - high-pressure pipe connection required

#### Dimensions

- 1 =  $29^\circ \pm 30'$
- 2 = 3/8 in 24 NF left
- 3 =  $\varnothing$  5,5 mm
- 4 = 19 mm



### SP/PFE accessories

Order number	Description	Operating pressure max.	
		bar	psi
744-000-0107	high-pressure pump head complete	4000	58000
24-2317-2017	high-pressure piston and body only	4000	58000



## Overview of multi-line grease pumps

### Hydraulically operated pump units

Product	Lubricant grease NLGI				Outlets	Reservoir <sup>6)</sup>		Metering quantity per outlet		Operating pressure max.		Page
	0	1	2	3		kg	lb	cm <sup>3</sup> /min	in <sup>3</sup> /min	bar	psi	
PFHM-ATEX	•	•	•	–	1–6	6	12	0,80–5,00	0.048–0.305	250	3 625	32

### Mechanically operated pump units

Product	Lubricant grease NLGI				Outlets	Reservoir <sup>6)</sup>		Metering quantity per outlet		Operating pressure max.		ATEX <sup>3)</sup>	Page
	0	1	2	3		kg	lb	cm <sup>3</sup> /min	in <sup>3</sup> /min	bar	psi		
RA 20/45	•	•	•	–	1–12	2–5	4.4–10	0,07–6,00	0.004–0.366	60	870	• <sup>4)</sup>	34
P 205	•	•	•	–	1–5	4–30	8.8–66	0,08–4,20	0.005–0.256	350	5 075	• <sup>5)</sup>	36
FF	•	•	•	•	1–12	4–10	8.8–22	0,04–6,90	0.002–0.421	350	5 075	• <sup>4)</sup>	38
P 215 <sup>2)</sup>	•	•	•	–	1–15	4–100	8.8–220	0,55–3,15	0.033–0.192	350	5 075	• <sup>5)</sup>	42
FB	•	•	•	•	1–24	6–30	13–66	0,04–7,70	0.002–0.469	350	5 075	• <sup>4)</sup>	44
P 230	•	•	•	–	1–30	30–100	66–220	0,55–3,15	0.033–0.192	350	5 075	•	48

### Electrically operated pump units <sup>1)</sup>

Product	Lubricant grease NLGI				Outlets	Reservoir <sup>6)</sup>		Metering quantity per outlet		Operating pressure max.		ATEX <sup>3)</sup>	Page
	0	1	2	3		kg	lb	cm <sup>3</sup> /min	in <sup>3</sup> /min	bar	psi		
RA 20/45	•	•	•	–	1–12	2–5	4.4–10	0,07–6,00	0.004–0.366	60	870	• <sup>4)</sup>	34
P 205	•	•	•	–	1–5	4–30	8.8–66	0,08–4,20	0.005–0.256	350	5 075	• <sup>5)</sup>	36
FF	•	•	•	•	1–12	4–10	8.8–22	0,04–6,00	0.002–0.366	350	5 075	• <sup>4)</sup>	38
P 212 <sup>2)</sup>	•	•	•	–	1–12	30	66	2,50–25,0	0.152–1.525	350	5 075	•	40
P 215 <sup>2)</sup>	•	•	•	–	1–15	4–100	8.8–220	0,55–3,15	0.033–0.192	350	5 075	• <sup>5)</sup>	42
FB	•	•	•	•	1–24	6–30	13–66	0,04–7,70	0.002–0.469	350	5 075	• <sup>4)</sup>	44
FB-XL	•	•	•	•	1–16	30	66	0,04–35,0	0.002–2.135	350	5 075	• <sup>4)</sup>	44
P 230	•	•	•	–	1–30	30–100	66–220	0,55–3,15	0.033–0.192	350	5 075	•	48

<sup>1)</sup> all data based on 50 Hz operation for connection with a frequency of 60 Hz, the speed and volumetric flow are increased by 20%

<sup>2)</sup> NLGI 3 on request

<sup>3)</sup> on request

<sup>4)</sup> for gas: II 2G c IICT4 Gb; for dust: II 2D c IICT 125°C Db

<sup>5)</sup> for gas: II 2G c IICT4 Gb; for dust: II 2D c IICT 120°C Db

<sup>6)</sup> valid for  $\rho=1 \text{ kg/dm}^3$

## Pump unit

## PFHM-ATEX



## Product description

The PFHM-ATEX is a hydraulically operated, high-pressure multi-line pump. Its one to six pumping elements are available in five sizes from 0,04 to 0,25 cm<sup>3</sup>/stroke (0.0024 to 0.0152 in<sup>3</sup>/stroke) or camshaft revolution. The ratio between the hydraulic motor and camshaft is generally 1:1.

The PFHM-ATEX's sturdy steel housing and reservoir with air breather enable use in dusty areas. When utilized in combination with downstream-located progressive divider valves, it can handle up to approximately 50 lubrication points. The reservoir with stirrer is suitable for both grease and oil and is designed for instead with a locking device.

## Features and benefits

- Sturdy design with standard, spring-return pumping elements and ATEX classifications
- Designed for 24/7 operation in harsh environments
- Varying speed and stroke volumes enable economical lubricant settings, hydraulic drive without electrics
- Modular design available in corrosiveness class C3 as standard or C5-M according to DIN EN ISO 12944
- Atex classification for gas, dust and mining application as standard

## Applications

- Mining, including underground
- Hydraulically operated machinery
- Screens and crushers in quarries
- Chemical industry, offshore

## Technical data

Function principle	hydraulically operated radial piston pump in an ATEX design
Metering quantity per stroke	KFG1.U0: 0,250 cm <sup>3</sup> ; 0.0152 in <sup>3</sup> KFG1.U1: 0,125 cm <sup>3</sup> ; 0.0076 in <sup>3</sup> KFG1.U2: 0,090 cm <sup>3</sup> ; 0.0054 in <sup>3</sup> KFG1.U3: 0,065 cm <sup>3</sup> ; 0.0039 in <sup>3</sup> KFG1.U4: 0,040 cm <sup>3</sup> ; 0.0024 in <sup>3</sup>
Metering quantity per outlet	0,8–5,0 cm <sup>3</sup> /min; 0.048–0.305 in <sup>3</sup> /min
Outlets	1 to 6
Lubricant	oil and grease: up to NLGI 2
Operating pressure	max. 250 bar; 3 625 psi
Operating temperature	–20 to +40 °C; –14 to +104 °F
Reservoir <sup>1)</sup>	6 kg, 12 lb
Internal ratio	1:1
Drive speed	main shaft 4–30 min <sup>-1</sup>
Hydraulic drive oil requirements	51,5 cm <sup>3</sup> per revolution, max. 175 bar, 2 540 psi
Outlet connection lubricant	M 14 × 1,5; tube Ø 6, 8, 10 mm
In/outlet hydraulic connection	M 22 × 1,5
Dimensions	580 × 230 × 230 mm 22.8 × 9.1 × 9.1 in
Mounting position	vertical
Options	C5-M

<sup>1)</sup> valid for ρ=1 kg/dm<sup>3</sup>


**NOTE**

For further technical information, technical drawings, accessories, spare parts or product function descriptions, see the following publication available on [SKF.com/lubrication](http://SKF.com/lubrication).



## Pump unit

# PFHM-ATEX

### Order information <sup>1)</sup>

Order number	Description
<b>PFHM-6-B6-C3-ATEX</b>	standard pump including hydraulic drive, without pumping element version C3 6 kg, 12.6 lbs reservoir; included ATEX approval: gas: II 2G Ex h IIC T6...T5 Gb dust: II 2D Ex h IIIC T85°C...T100°C Db mining: I M2
<b>PFHM-6-B6-C5-ATEX</b>	same as above, with an improved corrosion standard C5-M included ATEX approval: gas: II 2G Ex h IIB T6...T5 Gb dust: II 2D Ex h IIIC T85°C...T100°C Db mining: I M2

<sup>1)</sup> Please order pump elements separately



### PFHM-ATEX accessories - pump elements, spring return

Order number C3 version	C5 version	Description	Metering quantity <sup>1)</sup>			
			cm <sup>3</sup> /stroke	in <sup>3</sup> /stroke	cm <sup>3</sup> /min	in <sup>3</sup> /min
<b>KFG1.U0</b>	<b>KFG1.U0-C5M</b>	pump element	0,250	0.0152	5,0	0.305
<b>KFG1.U1</b>	<b>KFG1.U1-C5M</b>	pump element	0,125	0.0076	2,5	0.152
<b>KFG1.U2</b>	<b>KFG1.U2-C5M</b>	pump element	0,090	0.0054	1,8	0.109
<b>KFG1.U3</b>	<b>KFG1.U3-C5M</b>	pump element	0,065	0.0039	1,3	0.079
<b>KFG1.U4</b>	<b>KFG1.U4-C5M</b>	pump element	0,040	0.0024	0,8	0.048

<sup>1)</sup> The values given are design values of the pump elements and are valid at 20 rpm, a temperature of 20 °C, a back pressure of 50 bar and when using NLGI grade 2 greases.



### Pressure regulating valves

Order number C3 version	C5 version	Description	Pipe Ø		
			mm	bar	psi
<b>161-210-075</b>	<b>161-210-079</b>	pressure regulating valve	6	250	3 626
<b>161-210-076</b>	<b>161-210-080</b>	pressure regulating valve	8	250	3 626
<b>161-210-077</b>	<b>161-210-081</b>	pressure regulating valve	10	250	3 626

<sup>1)</sup> These valves have opening tolerances of ±20%.

## Pump unit

## RA 20/45



## Product description

The RA 20/45 radial piston pump features a modular design that enables use of up to three stackable pump elements, and outlet reduction or extension can be achieved easily.

The displacement of all outlets from a pump element is adjustable by a common setting device with a range of 33 to 100%. The grease reservoir contains a stirrer and screw conveyor to pressurize the grease into the suction chamber. This feature, in combination with a wide range of different selectable gear ratios, enables a small and continuous lubricant flow without the use of extra on/off timers.

## Features and benefits

- Modular, pump-to-point solution for 1 to 12 lubrication points
- Suitable for standard NLGI 2 greases
- Grease reservoir for 2 or 4.5 kg (4.4 to 10 lb), optional level switch
- Covers feed rates of droplets up to 10 cm<sup>3</sup>/min (0.6 in<sup>3</sup>/min)
- Simple system design with adjustable outputs
- Economical, multi-line grease pump

## Applications

- Compact machinery
- Conveyor systems
- Water pumps

## Technical data

Function principle	radial piston pump with stackable pumping elements, rotary or electrically operated
Metering quantity per outlet	0,007–0,02 cm <sup>3</sup> /revolution 0,0004–0,0012 in <sup>3</sup> /revolution
Outlets	1 to 12 (max. 3 elements with 1, 2 or 4 outlets)
Lubricant	grease: up to NLGI 2
Operating peak pressure	max. 63 bar, 913 psi
Operating temperature	–15 to +40 °C, +5 to 104 °F
Protection class	IP 55
Reservoir <sup>1)</sup>	2,0 or 4,5 kg, 4.4 or 10 lb
Internal ratio	5:1, 10,5:1, 15:1, 25:1, 75:1, 125:1
Drive speed	10 to 245 min <sup>-1</sup>
E-motor drive	with 3-phase motor
Outlet connection	G 1/8
Dimensions	depending on the model min. 353 × 180 × 180 mm max. 660 × 325 × 180 mm min. 13.9 × 7.1 × 7.1 in max. 26 × 12.8 × 7.1 in
Mounting position	vertical
Options	with level switch

<sup>1)</sup> Valid for ρ=1 kg/dm<sup>3</sup>



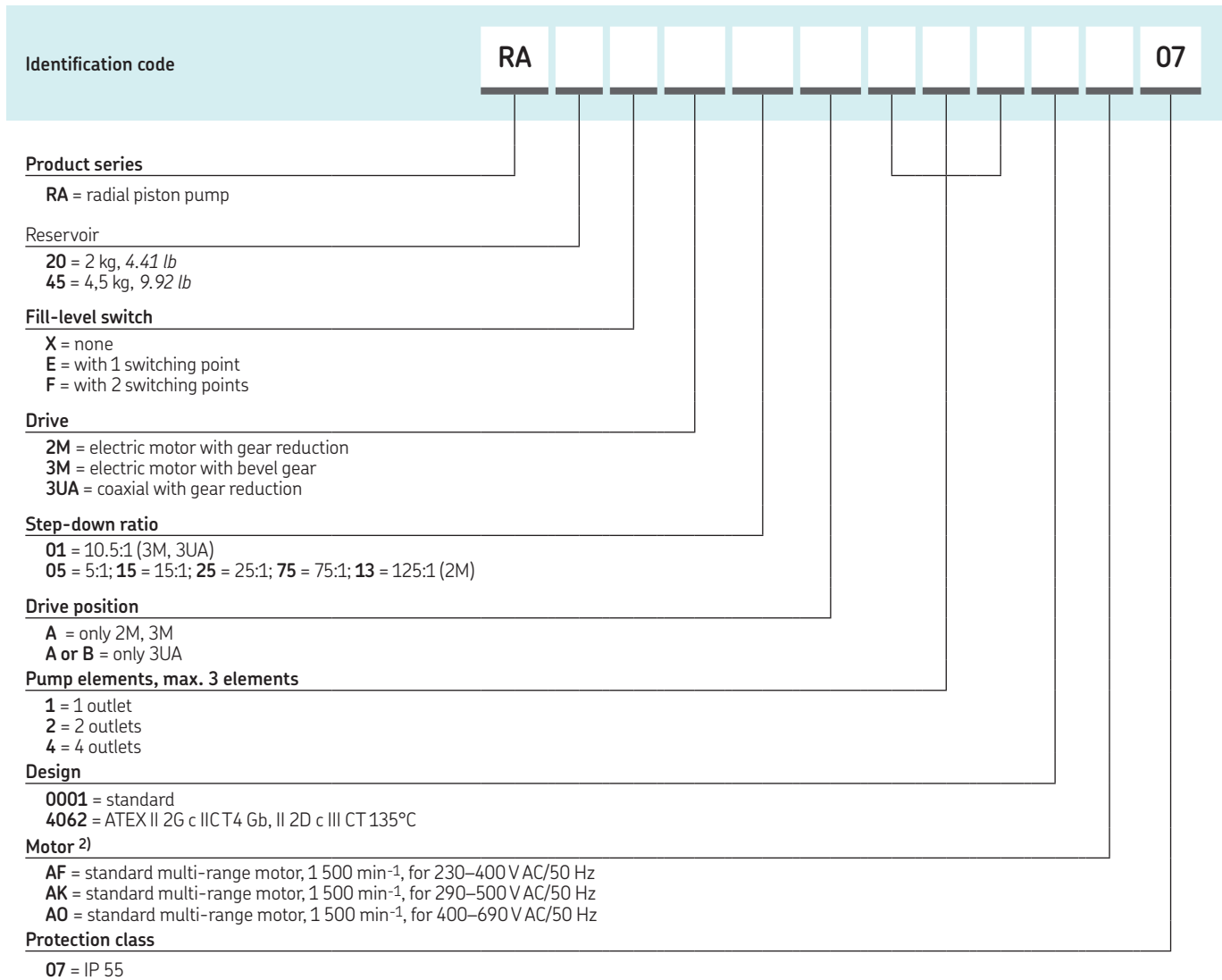
## NOTE

For further technical information, technical drawings, accessories, spare parts or product function descriptions, see the following publication available on [SKF.com/lubrication](http://SKF.com/lubrication):

**11103 EN, 951-170-230 EN**

# Pump unit

## RA20/45 grease



<sup>1)</sup> further models on request

### RA pump elements and tie rods

Order number	Description
24-1557-3520	pump element for 1 outlet
24-1557-3521	pump element for 2 outlets
24-1557-3522	pump element for 4 outlets
44-0717-2070	tie rod <sup>1)</sup> for 1 pump element
44-0717-2071	tie rod <sup>1)</sup> for 2 pump elements
44-0717-2072	tie rod <sup>1)</sup> for 3 pump elements
DIN125-B6.4-ST	washer, 6.4 DIN125 <sup>1)</sup>
DIN934-M6-8	nut <sup>1)</sup>

<sup>1)</sup> Two required per pump

### Reservoirs

Order number	Description
24-0254-2312	reservoir 2 kg, without fill-level switch
24-0254-2334	reservoir 2 kg, with fill-level switch E
24-0254-2330	reservoir 2 kg, with fill-level switch F
24-0254-2310	reservoir 4,5 kg, without fill-level switch
24-0254-2335	reservoir 4,5 kg, with fill-level switch E
24-0254-2331	reservoir 4,5 kg, with fill-level switch F

## Pump unit

## P 205



## Product description

The P 205 high-pressure, multi-line pump can supply lubricant directly to lubrication points or can be used as a centralized lubrication pump in large-sized progressive systems. It can drive up to five elements, which are available in varying sizes for optimum adjustability. The pump's drive and eccentric shaft design, high-efficiency worm gear, minimal number of parts and multi-range motor provide several advantages. P 205 pumps are available with a three-phase flange mount and multi-range motor or with a free shaft end for use with other motors. Various gear ratios and reservoir sizes with or without level control are offered.

## Features and benefits

- Durable, versatile and reliable pump series
- Suitable for grease or oil
- Designed for continual lubrication of machines and systems operating in harsh environments
- Broad range of output options
- Modular design and easy maintenance

## Applications

- Stationary machines with a high lubricant consumption
- Turbines in hydro-electric power plants
- Needling machines
- Screens and crushers in quarries
- Material handling equipment

## Technical data

Function principle	electrically operated, multi-piston pump
Metering quantity per stroke	0,04–0,23 cm <sup>3</sup> 0.002–0.014 in <sup>3</sup>
Output per outlet	0,08–4,20 cm <sup>3</sup> /min, 0.005–0.256 in <sup>3</sup> /min
Outlets	1 to 5
Lubricant	oil: viscosity from 40 mm <sup>2</sup> /s grease: up to NLGI 2
Operating pressure	max. 350 bar, 5 075 psi
Operating temperature	–20 to +40 °C, –4 to +104 °F
Protection class	IP 55
Materials	steel plate or plastic, depending on reservoir
Reservoir 1)	plastic: 4 and 8 kg, 8.8 and 17.6 lb steel: 5, 10 and 30 kg, 11; 22 and 66 lb
Line connection	G 1/4
Drive speed main shaft	grease: < 25 min <sup>-1</sup> , oil: < 25 min <sup>-1</sup>
Electrical connections	380–420 V AC/50 Hz, 440–480 V AC/60 Hz 500 V AC/50Hz
Dimensions	depending on the model min. 406 × 280 × 230 mm max. 507 × 365 × 300 mm min. 160 × 110 × 91 in max. 200 × 144 × 118 in
Mounting position	vertical
Options	several different level switches; ATEX versions

1) valid for  $\rho=1 \text{ kg/dm}^3$



## NOTE

For further technical information, technical drawings, accessories, spare parts or product function descriptions, see the following publication available on [SKF.com/lubrication](http://SKF.com/lubrication):

**13651 EN**

# Pump unit

## P 205

Identification code: **P 205** - [ ] - [ ] - [ ] - [ ] - [ ]

**Product series**

**Drive**  
 M = AC flange gear motor  
 F = free shaft end

**Gear ratio**  
 280 = 280:1  
 700 = 700:1  
 070 = 70:1

**Reservoir**  
 4 = plastic, 4 l, 1.05 gal  
 8 = plastic, 8 l, 2.11 gal  
 5 = steel plate, 5 l, 1.32 gal  
 10 = steel plate, 10 l, 2.64 gal  
 30 = steel plate, 30 l, 7.93 gal

**Reservoir design**  
 N = without level control  
 XY = for grease and oil  
 XL = for grease with low level control  
 BU = with level control (ultrasonic sensor for two switching points, low- and high-level)

**Pump elements; define max. 5 elements (f.i. 4 elements K6 = 4K6, ...)**  
 K 5 = piston Ø 5 mm, output per stroke: 0,11 cm<sup>3</sup>, 0.006 in<sup>3</sup>  
 K 6 = piston Ø 6 mm, output per stroke: 0,16 cm<sup>3</sup>, 0.009 in<sup>3</sup>  
 K 7 = piston Ø 6 mm, output per stroke: 0,23 cm<sup>3</sup>, 0.014 in<sup>3</sup>  
 KR = adjustable output, piston Ø 7 mm, output per stroke: 0,04-0,18 cm<sup>3</sup>, 0.002-0.010 in<sup>3</sup>

**Supplements to motor designation**  
 320 - 420, 440 - 480 = multi-range motor for nominal supply voltage, 380-420 V AC/50 Hz, 440-480 V AC/60 Hz  
 500 = single-range motor for nominal supply voltage, 500 V/50 Hz  
 000 = pump without motor, with coupling flange

**P205 pump elements**

Order number	Description	Metering quantity per stroke	
		cm <sup>3</sup>	in <sup>3</sup>
600-26875-2	pump element piston K 5	0,11	0.006
600-26876-2	pump element piston K 6	0,16	0.009
600-26877-2	pump element piston K 7	0,23	0.014
655-28716-1	pump element adjustable KR (7)	0,04-0,18	0.002-0.010
303-19285-1	closing screw <sup>1)</sup>	-	-

<sup>1)</sup> for outlet port instead of a pump element

**Pressure-relief valve and filling connectors**

Order number	Description
624-29056-1	pressure-relief valve, 350 bar, G 1/4 D 6 for tube Ø 6 mm OD
624-29054-1	pressure-relief valve, 350 bar, G 1/4 D 8 for tube Ø 8 mm OD
304-17571-1	filling connector G 1/4 female <sup>1)</sup>
304-17574-1	filling connector G 1/2 female <sup>1)</sup>

<sup>1)</sup> filling connector fits for vacant outlet ports

## Pump unit

# FF



### Product description

The multi-line pump unit of the FF series is suitable for small- and medium-sized systems due to its flow rate and reservoir. The lubricant can be fed to the lubrication points directly or via a progressive feeder. Designed for use with oil and stiff grease, the FF is a sturdy, vibration-resistant pump that withstands harsh environments and continuous operation.

### Features and benefits

- Designed for small- and medium-sized systems
- Sturdy and vibration resistant
- Suitable for oils and very stiff greases
- Withstands harsh operating conditions and continuous operation

### Applications

- Automotive industry and wind energy systems
- Construction materials machinery
- Tunnel-driving machinery, mining and conveyor systems
- Paper and boxing machinery
- Steel and heavy industry; annealing machines



### Technical data

Function principle	radial piston pump with stirrer, electrically operated
Operating temperature	-15 to +40 °C, +5 to 104 °F
Operating pressure	125 to 350 bar, 1 800 to 5 075 psi
Lubricant	oil: mineral- and synthetic-based; viscosity from 50 mm <sup>2</sup> /s grease: up to NLGI 3
Reservoir <sup>1)</sup>	4 and 10 kg, 8.8 and 22 lbs
Metering quantity per stroke	KR 6: 0,027–0,08 cm <sup>3</sup> , 0.0016–0.0048 in <sup>3</sup> KR 8: 0,05–0,15 cm <sup>3</sup> , 0.003–0.009 in <sup>3</sup> KR 10: 0,077–0,23 cm <sup>3</sup> , 0.005–0.014 in <sup>3</sup>
Internal ratio	33:1, 80:1, 150:1, 300:1, 600:1
Outlet connection	1/4 NPTF, tube Ø 6, 8, 10 mm OD
E-motor drive	with 3-phase motor
Drive speed main shaft	< 32 min <sup>-1</sup>
Dimensions	min. 450 × 370 × 230 mm max. 656 × 370 × 230 mm min. 17.7 × 14.6 × 9 in max. 25.8 × 14.6 × 9 in
Protection class	IP 55
Mounting position	vertical
Options	several different reservoir designs for oil and grease, level switches, ATEX versions, pressure-limiting valves

<sup>1)</sup> valid for ρ=1 kg/dm<sup>3</sup>



### NOTE

For further technical information, technical drawings, accessories, spare parts or product function descriptions, see the following publication available on [SKF.com/lubrication](http://SKF.com/lubrication):

**14129; 951-170-201; 951-180-076**

# Pump unit

## FF

Identification code	FF									A	0001		07
<b>Product series</b>	FF												
<b>Reservoir</b>	04 = 4 kg, 8.81 lb 10 = 10 kg, 22 lb												
<b>Level indicator</b>	X = reservoir without fill-level control/fill-level switch  <b>for grease:</b> G = optical fill-level control (dip stick) E = fill-level switch, 1 switching point (min.) F = fill-level switch, 2 switching points (min., max.) H = fill-level switch, 3 switching points (min., min. pre-warning, max.) A = fill-level switch, 3 switching points (min., min. pre-warning, max.)  <b>for oil:</b> S = optical fill-level control, sight glass W = read contact, 1 switching point (min.)  <b>for grease and oil:</b> U2 = ultrasonic sensor with 2 switching points (min., max.)												
<b>Pump type</b>	1M = motor drive with double gear reduction 2M = motor drive with single gear reduction												
<b>Drive type</b>	1M: 08 = 80:1, 15 = 150:1, 30 = 300:1, 60 = 600:1 2M: 06 = 33:1												
<b>Pump element KR 6</b> (define in total KR 6, KR 8, KR 120 max. 12 elements)	00–12 = number of pump elements, KR 6 piston Ø 6 mm, p <sub>max</sub> = 350 bar; 5 075 psi												
<b>Pump element KR 8</b> (define in total KR 6, KR 8, KR 120 max. 12 elements)	00–12 = number of pump elements, KR 8 piston Ø 8 mm, p <sub>max</sub> = 200 bar, 2 900 psi												
<b>Pump element KR 10</b> (define in total KR 6, KR 8, KR 120 max. 12 elements)	00–12 = number of pump elements, KR 10 piston Ø 10 mm; p <sub>max</sub> = 125 bar; 1 800 psi												
<b>Connection tube Ø OD</b>	A = 6 mm                      B = 8 mm C = 10 mm                     D = 1/4 NPT– internal thread												
<b>Modification index</b>	A												
<b>Design key</b>	0001 = basic design with adjustable pump elements												
<b>Motor code 1) 2)</b>	AH = 750 min <sup>-1</sup> , for 230–400 V AC/50 Hz                      AG = 1 000 min <sup>-1</sup> , for 230–400 V AC/50 Hz AM = 750 min <sup>-1</sup> , for 290–500 V AC/50 Hz                      AL = 1 000 min <sup>-1</sup> , for 290–500 V AC/50 Hz AQ = 1 500 min <sup>-1</sup> , for 400–690 V AC/50 Hz                      AP = 1 000 min <sup>-1</sup> , for 400–690 V AC/50 Hz AK = 1 500 min <sup>-1</sup> , for 290–500 V AC/50 Hz AF = 1 500 min <sup>-1</sup> , for 230–400 V AC/50 Hz												
<b>Protection class 1)</b>	07 = IP 55, ATEX on request												

1) further models on request

 2) 1M = 1 000 + 1 500 min<sup>-1</sup>; 2M = 750 + 1 000 min<sup>-1</sup>

## Pump unit

## P 212



## Product description

The P 212 is a high-pressure, multi-line pump that can drive up to 12 elements. It is capable of handling direct supply of lubrication points in multi-line systems or can be used as a centralized lubrication pump in large-sized progressive systems. The drive and eccentric shaft design, high-efficiency worm gear and minimal number of parts provide the pump with several advantages. P 212 pumps are available with a powerful, three-phase, multi-range motor. Suitable for both grease and oil, the reservoir is offered with or without level control.

## Features and benefits

- High output per pump element
- High pressure even with difficult lubricants
- Due to the high element output, no element crossporting necessary
- Sturdy and durable pump series that operates in harsh environments
- Modular design
- Easy maintenance

## Applications

- Machines with a high lubricant consumption
- Tunnel boring machines
- Mining
- Rubber-mixing machines as a pump for plasticizer liquid



## Technical data

Function principle	radial piston pump with stirrer, electrically operated
Outlets	1 to 12
Operating temperature	-20 to +40 °C, -4 to +104 °F
Lubricant	mineral and synthetic oil and grease oil: viscosity from 40 mm <sup>2</sup> /s grease: up to NLGI 2
Operating pressure	max. 350 bar, 5 075 psi
Metering quantity per stroke	Piston KR 7: 0,11–0,39 cm <sup>3</sup> ; 0.0067–0.024 in <sup>3</sup> Piston KR 12: 0,33–1,12 cm <sup>3</sup> ; 0.02–0.07 in <sup>3</sup>
Reservoir <sup>1)</sup>	30 kg, 66 lb
Outlet connection	G 3/8
Internal ratio	67:1
Output per outlet	2,5–25 cm <sup>3</sup> /min, 0.15–1.5 in <sup>3</sup> /min
Drive speed main shaft	< 22 min <sup>-1</sup>
E-motor drive	with 3-phase motor
Dimensions	880 × 510 × 350 mm 34.65 × 20.08 × 13.78 in
Protection class	IP 55
Mounting position	vertical



## NOTE

For further technical information, technical drawings, accessories, spare parts or product function descriptions, see the following publication available on [SKF.com/lubrication](http://SKF.com/lubrication):

**15301**



# Pump unit

## P 212

Identification code	<b>P</b>	<b>212</b>	-	<b>MG</b>	<b>067</b>	-	<b>30</b>		-		-	<b>380-480</b>
<b>Product series</b>	P 212											
<b>Drive</b>			MG = AC flange motor									
<b>Gear ratio</b>			067 = 67:1									
<b>Reservoir</b>			30 = steel plate, 30 l, 7.92 gal									
<b>Reservoir design</b>			XY = for grease and oil N = without level control BU = with level control (ultrasonic sensor for two switching points, low- and high-level)									
<b>Pump elements; define max. 12 elements (f.i. 4 elements KR 12 = 4KR 12, ...)</b>			KR 7 = adjustable; piston Ø 7 mm; output per stroke: 0,11–0,39 cm <sup>3</sup> ; 0.0067–0.024 in <sup>3</sup> KR 12 = adjustable; piston Ø 12 mm; output per stroke: 0,33–1,12 cm <sup>3</sup> ; 0.02–0.07 in <sup>3</sup>									
<b>Motor designation, supplements</b>			380–480 = multi-range motor for 380–420 V AC/50 Hz, 440–480 V AC/60 Hz									



### P 212 pump elements and pressure-relief valves

Order number	Description	Connection	Operating pressure max.	
			bar	psi
660-77835-1	pump element KR 7	G 3/8	–	–
660-77619-1	pump element KR 12	G 3/8	–	–
303-17431-1	closing screw <sup>1)</sup>	M 27 × 1,5	–	–
624-25483-1	pressure-relief valve <sup>2)</sup>	tube stud Ø10 mm	350	5 075
624-28362-1	pressure-relief valve <sup>2)</sup>	tube stud Ø12 mm	350	5 075

<sup>1)</sup> for outlet port instead of a pump element  
<sup>2)</sup> to use via T-piece

## Pump unit

## P 215



## Product description

The P 215 is a high-pressure, multi-line pump that can drive up to 15 pump elements. Different sizes of adjustable elements are available. It is capable of handling direct supply of lubrication points or can be used as a centralized lubrication pump in large-sized progressive systems.

P 215 pumps are available with a three-phase, multi-range motor, with a single-range motor, with a free shaft end for use with other motors, or with an oscillating drive. Various gear ratios and reservoirs of different sizes and materials are available. The reservoirs are suitable for both grease and oil and are offered with or without level control.

## Features and benefits

- Sturdy and durable pump series
- Continual lubrication of machines and systems that operate in harsh environments
- Versatile pump regarding reservoir and drive types
- Broad range of output possibilities due to high number of outlets and different sizes of pump elements
- Modular design and easy maintenance

## Applications

- Stationary machines with a high lubricant consumption
- Screens and crushers in quarries
- Material handling equipment
- Roller coasters

## Technical data

Function principle	radial piston pump with stirrer; rotary, oscillating or electrically operated
Outlets	1 to 15
Operating temperature	-20 to +40 °C, -4 to +104 °F
Operating pressure	350 bar, 5 075 psi
Lubricant	mineral and synthetic oil and grease oil: viscosity from 20 mm <sup>2</sup> /s grease: up to NLGI 2
Metering quantity per stroke	min. 0,11 cm <sup>3</sup> , 0,0067 in <sup>3</sup> max. 0,23 cm <sup>3</sup> , 0,014 in <sup>3</sup>
Reservoir <sup>1)</sup>	plastic: 4 and 8 kg, 8.8 and 17.6 lb steel: 10, 30 and 100 kg, 22; 67 and 220 lb
Internal ratio	7:1, 49:1, 100:1, 490:1
Output per Outlet	0,13 to 3,5 cm <sup>3</sup> /min, 0,008 to 0,21 in <sup>3</sup> /min
Outlet connection	G 1/4
E-motor drive	with 3-phase motor
Drive speed	< 28 min <sup>-1</sup>
Dimensions	min. 438 × 453 × 326 mm max. 1 225 × 600 × 550 mm min. 17,24 × 17,84 × 12,84 in max. 48,23 × 23,26 × 21,65 in
Protection class	IP 55
Mounting position	vertical
Options	hydraulic driven; 24 V DC motor
<sup>1)</sup> valid for ρ=1 kg/dm <sup>3</sup>	



## NOTE

For further technical information, technical drawings, accessories, spare parts or product function descriptions, see the following publication available on [SKF.com/lubrication](http://SKF.com/lubrication):

**13651 EN**

# Pump unit

## P 215

Identification code: **P 215** - - - - -

**Product series**

**Drive**  
 M = AC flange motor  
 F = free shaft end  
 P = oscillating drive

**Gear ratio**  
 490 = 490:1  
 100 = 100:1  
 049 = 49:1 (for oil only)  
 007 = 7:1 (for P and F drive assemblies only)

**Reservoir**  
 4 = plastic, 4 l, 1.05 gal      30 = steel plate, 30 l, 7.92 gal  
 8 = plastic, 8 l, 2.11 gal      100 = steel plate, 100 l, 26.42 gal  
 10 = steel plate, 10 l, 2.64 gal

**Reservoir design**  
 YL = for oil with floating-switch, low-level  
 XY = for grease and oil  
 N = without level control  
 BU = with level control (ultrasonic sensor for two switching points, low- and high-level)

**Pump elements, define max. 15 elements (f.i. 11 elements K 7 = 11K7, ...)**  
 1–15 = number of pump elements, adjustable  
 K 5 = piston Ø 5 mm, max. adjustable output per stroke: 0,11 cm<sup>3</sup>, 0.0067 in<sup>3</sup>  
 K 6 = piston Ø 6 mm, max. adjustable output per stroke: 0,16 cm<sup>3</sup>, 0.0098 in<sup>3</sup>  
 K 7 = piston Ø 7 mm, max. adjustable output per stroke: 0,23 cm<sup>3</sup>, 0.014 in<sup>3</sup>

**Motor designation, supplements**  
 320–420, 440–480 = multi-range motor for nominal supply voltages, 380–420 VAC/50 Hz, 440–480 VAC/60 Hz  
 500 = single-range motor for nominal supply voltages, 500 V/50 Hz  
 000 = pump without motor, with coupling flange



### P215 pump elements and pressure-relief valves

Order number	Description	Connection	Operating pressure max.	
			bar	psi
600-27464-2	pump element K 5	G 1/4	–	–
600-25046-3	pump element K 6	G 1/4	–	–
600-25047-3	pump element K 7	G 1/4	–	–
303-19285-1	closing screw <sup>1)</sup>	M 22 x 1,5	–	–
624-25478-1	pressure-relief valve <sup>2)</sup>	tube stud Ø 6 mm	200	2 900
624-25479-1	pressure-relief valve <sup>2)</sup>	tube stud Ø 6 mm	350	5 075
624-25480-1	pressure-relief valve <sup>2)</sup>	tube stud Ø 8 mm	200	2 900
624-25481-1	pressure-relief valve <sup>2)</sup>	tube stud Ø 8 mm	350	5 075
624-25482-1	pressure-relief valve <sup>2)</sup>	tube stud Ø 10 mm	200	2 900
624-25483-1	pressure-relief valve <sup>2)</sup>	tube stud Ø 10 mm	350	5 075
304-17571-1	filler fitting <sup>1)</sup>	G 1/4 female, M 22 x 1,5	–	–

<sup>1)</sup> for outlet port instead of a pump element  
<sup>2)</sup> filling connector fits for vacant outlet ports

## Pump unit

# FB / FB - XL



### Product description

The FB multi-line pump unit is equipped standard with a motor enclosure of protection class IP 55 or better. The pump is available in a design for explosive atmospheres (ATEX) on request. There are also different fill-level switches for various applications and lubricants. We recommend the U2 ultrasonic design as the standard fill-level switch.

When the FB pump is used as an oil lubrication pump, the reservoir can be equipped with an oil-level monitor and fill-level switch "W". The oil-level monitor is designed and fitted in accordance with the customer's specific requirements as stated when ordering. Additionally, a specialized filling device and a visual fill-level indicator can be installed.

### Features and benefits

- Sturdy, vibration-resistant multi-line pump
- Suitable for oil and very stiff greases
- Withstands harsh operating conditions and continuous operation
- Suitable for large systems
- Lubricant can be fed directly to lubrication points or via progressive feeder system

### Applications

- Automotive industry and wind energy systems
- Construction materials machinery
- Tunnel-boring and mining, conveyor systems
- Paper and packaging machinery
- Steel and heavy industry

### Technical data

Function principle	radial piston pump with stirrer
Operating temperature	-15 to +40 °C, +5 to 104 °F
Operating pressure	125 to 350 bar, 1 800 to 5 075 psi
Outlets	1-24
Lubricant	oil: viscosity from 40 mm <sup>3</sup> /s grease: up to NLGI 3
Metering quantity per stroke	
KR 6:	0,027-0,08 cm <sup>3</sup> , 0.0016-0.0048 in <sup>3</sup>
KR 8:	0,050-0,15 cm <sup>3</sup> , 0.0030-0.0091 in <sup>3</sup>
KR 10:	0,077-0,23 cm <sup>3</sup> , 0.0047-0.0140 in <sup>3</sup>
for FB-XL lower level KR 7:	0,11 - 0,39 cm <sup>3</sup> , 0.0067-0.0237 in <sup>3</sup>
for FB-XL lower level KR 12:	0,33-1,12 cm <sup>3</sup> , 0.020-0.068 in <sup>3</sup>
Reservoir <sup>1)</sup>	6, 15, 30 kg, 13.2, 33, 66 lb
Outlet connection	1/4 NPTF, tube Ø 6, 8, 10 mm OD
Internal ratio	45:1, 105:1, 288:1, 720:1
Output per outlet	0,04-7,7 cm <sup>3</sup> /min 0.0024-0.47 in <sup>3</sup> /min
Drive speed main shaft	< 32 min <sup>-1</sup>
E-motor drive	with 3-phase motor
Dimensions	min. 420 × 533 × 290 mm max. 660 × 533 × 290 mm min. 16.5 × 26 × 11.4 in max. 26 × 26 × 11.4 in
Protection class	IP 55
Mounting position	vertical
Options	ATEX versions, safety valves

<sup>1)</sup> valid for  $\rho=1 \text{ kg/dm}^3$

### NOTE

For further technical information, technical drawings, accessories, spare parts or product function descriptions, see the following publication available on [SKF.com/lubrication](http://SKF.com/lubrication):  
**1-3026; 951-170-21; 951-170-201;**  
**951-170-227; 951-180-076**

# Pump unit

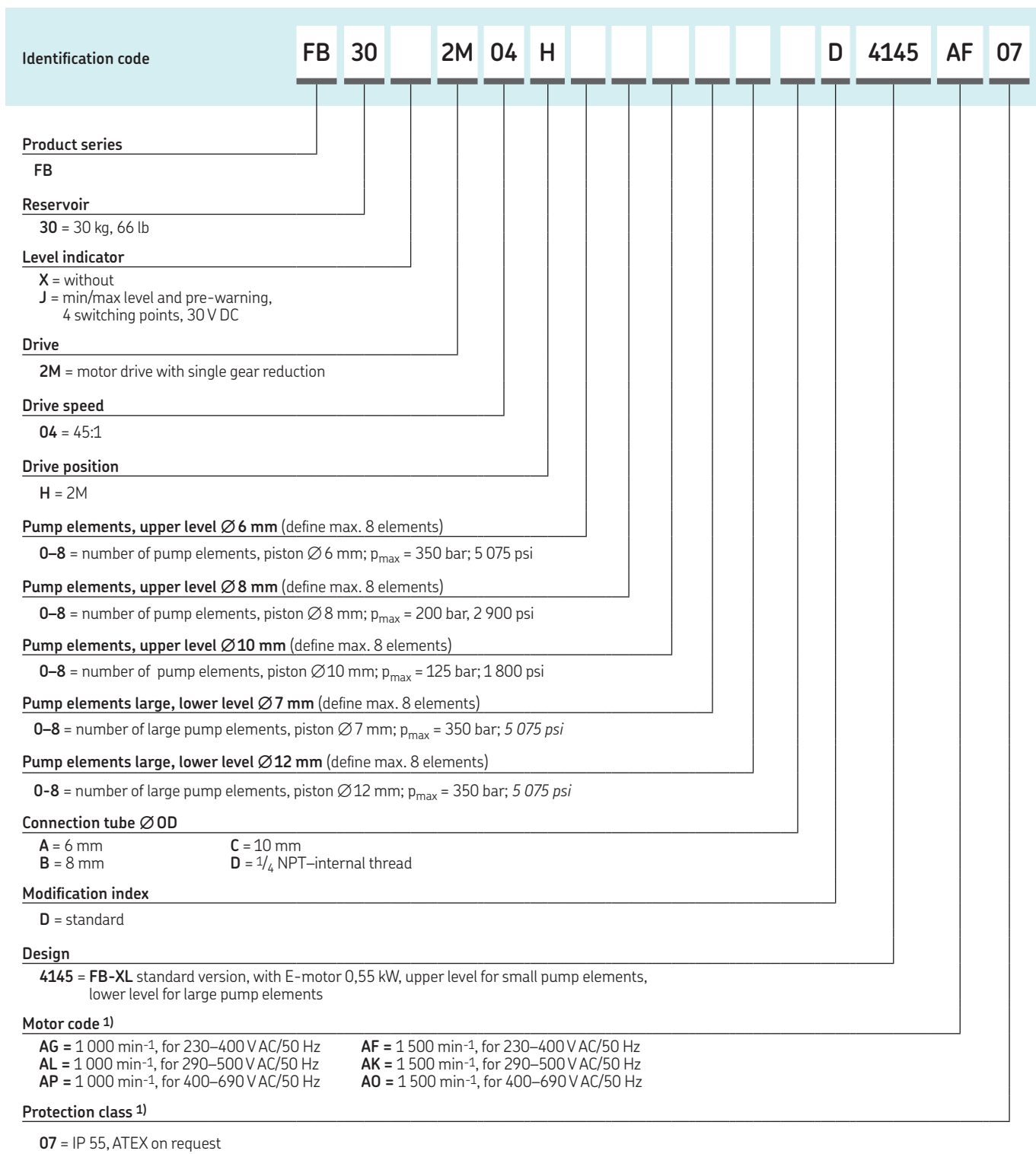
## FB

Identification code	FB												D	0001		07
<b>Product series</b> FB																
<b>Reservoir</b> 06 = 6 kg, 13 lb 15 = 15 kg, 33 lb 30 = 30 kg, 66 lb																
<b>Level indicator</b> X = without for grease: G = visual indicator for grease (dip stick) E = min. level, 1 switching point, 230 V AC/DC F = min./max. level, 2 switching points, 42 V AC/DC H = min., pre-warning min., max. level, 3 switching points, 30 V DC A = min., pre-warning min., max. level, 3 switching points, 250 V AC/DC J = min./max. level and pre-warning, 4 switching points, 30 V DC for oil: S = visual indicator for oil (sight glass) W = float switch for oil, min. level, 1 switching point, 250 V AC/DC for grease and oil: U2 = ultrasonic sensor for oil/grease, min./max. level, 2 switching points, 30 V AC/DC																
<b>Drive type</b> 1M = motor drive with double gear reduction 2M = motor drive with single gear reduction																
<b>Ratio internal</b> 1M drive : 06 = 105:1 07 = 288:1 08 = 720:1 2M drive: 04 = 45:1																
<b>Drive position</b> 1M drive: B = reservoir: 6, 15 and 30 kg; 13, 33, 66 lb E = reservoir: only 6 and 15 kg; 13, 33 lb 2M drive: H = reservoir: 6, 15 and 30 kg; 13, 33, 66 lb																
<b>Pump elements Ø 6 mm</b> (define in total max. 24) 00–24 = number of pump elements, piston Ø 6 mm; p <sub>max</sub> = 350 bar; 5 075 psi																
<b>Pump elements Ø 8 mm</b> (define in total max. 24) 00–24 = number of pump elements, piston Ø 8 mm; p <sub>max</sub> = 200 bar, 2 900 psi																
<b>Pump elements Ø 10 mm</b> (define in total max. 24) 00–24 = number of pump elements, piston Ø 10 mm; p <sub>max</sub> = 125 bar; 1 800 psi																
<b>Connection tube Ø OD</b> A = 6 mm      C = 10 mm      B = 8 mm      D = 1/4 NPT– internal thread																
<b>Modification index</b> D = actual version																
<b>Design key</b> 0001 = standard																
<b>Motor code <sup>1)</sup></b> AG = 1 000 min <sup>-1</sup> , for 230–400 V AC/50 Hz AL = 1 000 min <sup>-1</sup> , for 290–500 V AC/50 Hz AP = 1 000 min <sup>-1</sup> , for 400–690 V AC/50 Hz AF = 1 500 min <sup>-1</sup> , for 230–400 V AC/50 Hz AK = 1 500 min <sup>-1</sup> , for 290–500 V AC/50 Hz AO = 1 500 min <sup>-1</sup> , for 400–690 V AC/50 Hz																
<b>Protection class <sup>1)</sup></b> 07 = IP 55, ATEX on request																

<sup>1)</sup> other models on request

# Pump unit

## FB - XL



<sup>1)</sup> Other models on request

## Pump unit

# FB/FB - XL/FF Accessories



### Pump elements for oil and grease FF, FB and FB-XL upper level

Order number	Piston
	Ø mm
24-1557-3680	6
24-1557-3681	8
24-1557-3683	10

### Pump element for oil and grease, FB-XL lower level, P 212 <sup>1)</sup>

Order number	Piston
	Ø mm
660-77835-1	7
660-77619-1	12

### Pressure-limiting valves for grease pump elements FF, FB and FB-XL upper level <sup>1)</sup>

Order number	Pressure	
	bar	psi
24-2103-2273	50	725
24-2103-2344	100	1 450
24-2103-2345	125	1 815
24-2103-2342	150	2 175
24-2103-2272	175	2 540
24-2103-2346	200	2 900
24-2103-2271	350	5 075

### Outlet stud

Order number	Tube
	Ø mm
24-2255-2003	6
24-2255-2004	8
24-2255-2005	10

<sup>1)</sup> pressure-limiting valve see chapter valves

<sup>1)</sup> for direct assembly for each pump element (instead of the closure plug)

## Pump unit

## P 230



## Product description

A derivative of the P 215 pump, the P 230 is a high-pressure, multi-line pump that can drive up to 30 adjustable pump elements. It is used within a multi-line system to directly supply lubrication points or within large-sized progressive systems. Due to the increased number of possible pump elements compared to the P 215, a powerful 0,25 kW motor is used.

P 230 pumps are available with a three-phase, multi-range motor or a single-range motor, and various gear ratios are offered. Suitable for grease or oil, reservoirs are available in different sizes with or without level control.

## Features and benefits

- Sturdy and durable pump series
- Continual lubrication of machines and systems that operate in harsh environments
- Broad range of output options due to increased number of outlets and varying sizes of adjustable pump elements
- Modular design and easy maintenance

## Applications

- Stationary machines with high lubricant consumption
- Rubber- and plastic-mixing machines
- Conveyors
- Cranes
- Eccentric presses
- Forging machines

## Technical data

Function principle	radial piston pump with stirrer, rotary, oscillating or electrically operated
Outlets	1 to 30
Operating temperature	-20 to +40 °C, -4 to +104 °F
Lubricant	mineral and synthetic oil and grease oil: viscosity from 20 mm <sup>2</sup> /s grease: up to NLGI 2
Operating pressure	max. 350 bar, 5 075 psi
Metreing quantity per stroke	min. 0,11 cm <sup>3</sup> , 0.0067 in <sup>3</sup> max. 0,23 cm <sup>3</sup> , 0.014 in <sup>3</sup>
Reservoir <sup>1)</sup>	30 and 100 kg, 66 and 220 lb
Internal ratio	49:1, 100:1, 490:1
Output per outlet	0,13–6,4 cm <sup>3</sup> /min, 0.008–0.39 in <sup>3</sup> /min
Outlet connection	G 1/4
E-motor drive	with 3-phase motor
Drive speed	< 28 min <sup>-1</sup>
Dimensions	min. 840 × 463 × 330 mm max. 1300 × 463 × 550 mm min. 33.07 × 18.23 × 12.99 in max. 51.18 × 18.23 × 21.65 in
Options	hydraulic drive; 24 V DC motor

<sup>1)</sup> valid for ρ=1 kg/dm<sup>3</sup>



## NOTE

For further technical information, technical drawings, accessories, spare parts or product function descriptions, see [SKF.com/lubrication](http://SKF.com/lubrication).



# Pump unit

## P 230

Identification code: **P 230** - [ ] - [ ] - [ ] - [ ] - [ ] - [ ]

**Product series**

**Drive**  
 MG = AC flange gear motor  
 F = free shaft end

**Gear ratio**  
 490 = 490:1  
 100 = 100:1  
 049 = 49:1 (for oil only)

**Reservoir**  
 30 = steel plate, 30 l, 7.92 gal  
 100 = steel plate, 100 l, 26.42 gal

**Reservoir design**  
 YL = for oil with floating-switch low level  
 XY = for grease and oil  
 N = without level control  
 BU = with level control (ultrasonic sensor for two switching points, low- and high-level)

**Pump elements, adjustable, define max. 30 elements (f.i. 25 elements K6 = 25K6, ...)**  
 1-30 = number of pump elements  
 K 5 = piston Ø 5 mm, max. adjustable output per stroke: 0,11 cm<sup>3</sup>, 0.0067 in<sup>3</sup>  
 K 6 = piston Ø 6 mm, 0.236 in, max. adjustable output per stroke: 0,16 cm<sup>3</sup>, 0.0098 in<sup>3</sup>  
 K 7 = piston Ø 7 mm, 0.275 in, max. adjustable output per stroke: 0,23 cm<sup>3</sup>, 0.014 in<sup>3</sup>

**Supplements to motor designation**  
 320-420, 440-480 = multi-range motor for nominal supply voltages, 380-420 V AC/50 Hz, 440-480 V AC/60 Hz  
 500 = single-range motor for nominal supply voltages, 500 V AC/50 Hz  
 000 = pump without motor, with coupling flange



### P 230 pump elements and pressure-relief valves

Order number	Description	Connection	Pressure max	
			bar	psi
600-27464-2	pump element K 5	G 1/4	-	-
600-25047-3	pump element K 7	G 1/4	-	-
600-25046-3	pump element K 6	G 1/4	-	-
303-19285-1	closing screw <sup>1)</sup>	M 27 x 1,5	-	-
624-25478-1	pressure-relief valve	tube stud Ø 6 mm	200	2 900
624-25479-1	pressure-relief valve	tube stud Ø 6 mm	350	5 075
624-25480-1	pressure-relief valve	tube stud Ø 8 mm	200	2 900
624-25481-1	pressure-relief valve	tube stud Ø 8 mm	350	5 075
624-25482-1	pressure-relief valve	tube stud Ø 10 mm	200	2 900
624-25483-1	pressure-relief valve	tube stud Ø 10 mm	350	5 075
304-17571-1	filler adapter	G 1/4 female <sup>2)</sup>	-	-
304-17574-1	filler adapter	G 1/2 female <sup>2)</sup>	-	-

<sup>1)</sup> for outlet port instead of a pump element  
<sup>2)</sup> for connection to vacant outlet ports



## Overview of control units

Manually operated pumps									
Product	Description 1)	Voltage		Timer	Level monitoring	Pulse evaluation	Without housing	Stand alone	Page
		VAC	VDC						
IGZ ...	only for one pump	115–230	24	•	•	–	•	–	52
EXZT ...	for one pump and one pulse generator	115–230	24	•	•	•	•	–	52
EOT-2	only for one pump	–	12, 24	•	–	–	–	•	54
LMC 2	for one pump and one pulse generator	230	24	•	•	•	–	•	55
LMC 301	. six pulse generators (with extension 10 extra)	90–264	24	•	•	•	–	•	56
					•	•			

## Control unit

## IGZ/EXZT



## Product description

IGZ 51 and EXZT universal electronic control and monitoring devices are used in multi-line and progressive lubrication systems and are available in two voltage versions. Developed for stationary industrial applications, these devices may be installed in a switching cabinet or internally in a compact lubrication unit. They can be used as time-dependent or pulse-dependent controllers to initiate a lubrication cycle.

The EXZT devices control the pump running time and monitors simultaneously the strokes of the pulse generator or sensor of the metering device. All devices have custom-built functions integrated and can be set to meet system requirements.

## Features and benefits

- Combined universal control and monitoring device
- Easy installation by top hat rail mounting
- Adjustable operating modes
- Time operation or load-dependent, machine-stroke operation
- Low-level control and EPROM included

## Applications

- Stationary industrial applications
- Installation in switching cabinet of stationary general industry machines

## Technical data

Function principle	universal electronic control and monitoring device
Operating temperature	0 to +60 °C, +32 to 140 °F
Output voltage	24 V DC +10%/-15%
Connector for class	II
Protection class	IP 30, clamps IP 20
Dimensions	70 × 75 × 110 mm 2.7 × 3 × 4.3 in

## Version + 471

Input voltage	100 – 120 V AC; 200 – 240 V AC
Input current rated	70 mA / 35 mA
Power input	8 W
Frequency	50 – 60 Hz
Fuse	max. 6.3 A
Switching current	max. 5 A
Input voltage sensors	24 V DC

## Version + 472

Input voltage	20 – 24 V DC; 20 – 24 V AC
Input current rated	75 mA at max. fan-out of 250 mA
Power input	5 W
Frequency	DC or 50 – 60 Hz
Fuse	max. 6.3 A
Switching current	max. 5 A
Input voltage sensors	24 V DC



## NOTE

For further technical information, technical drawings, accessories, spare parts or product function descriptions, see the following publications available on [SKF.com/lubrication](http://SKF.com/lubrication):

**1-1700-1 EN, 1-1700-2 EN, 951-180-001 EN**

## Control unit

# IGZ/EXZT

### Order information

Order number	Input voltage	Monitoring time adjustable	Level monitoring	Interval time extension	Lubricant levels early warning, contact	Pulse monitoring
IG351-10-E + 471	120, 230 V AC	•	NO <sup>3)</sup>	•	–	–
IG351-10-E + 472	24 V DC	•	NO <sup>3)</sup>	•	–	–
EXZT 2A03-E + 471	120, 230 V AC	•	NC <sup>4)</sup>	•	•	•
EXZT 2A03-E + 472	24 V DC	•	NC <sup>4)</sup>	•	•	•

<sup>1)</sup> Only for one pump

<sup>2)</sup> For one pump and one pulse transmitter

<sup>3)</sup> NO = contact normally open

<sup>4)</sup> NC = contact normally closed

## Control unit

## EOT - 2



## Product description

The EOT-2 controller is designed to control lubrication pumps during interval operation in multi-line systems. Rotary switches on the printed circuit board may be used to adjust lubrication time in seconds or minutes and pause time in minutes or hours. The EOT-2 is suitable for retrofit installation and often is used when a lubrication pump has no integrated control unit. Additional lubrication cycles can be triggered via a pushbutton.

## Features and benefits

- Easy-to-use controller for installation, indoor and outdoor
- Suitable for retrofit, easy time setting and function control

## Applications

- Lubrication pumps without integrated controller
- Agricultural machinery, chain lubrication systems
- Simple lubrication systems in machines
- In connection with motor relay assembly; also preferred for three-phase, multi-line pump units

## Technical data

Function principle	control and monitoring device
Operating temperature	-25 to +70 °C, -13 to +158 °F
Supply voltage	12 or 24 V DC
Current draw	max. ≤ 7 A
Outputs	transistor / N.O.
Pause time	min. 4 min max. 15 h
Running time	min. 8 sec max. 30 min
Standard	CE
Protection class	IP 65
Dimensions	122 × 118 × 56 mm, 4.80 × 4.65 × 2.00 in
Mounting position	any

## Order information

Order number	Description
<b>236-10850-7</b>	EOT-2 controller with motor starter 0,4-0,6 A
<b>236-10850-8</b>	EOT-2 controller with motor starter 0,6-1,0 A
<b>236-10850-9</b>	EOT-2 controller with motor starter 1,0-1,6 A
<b>236-10980-6</b>	EOT-2 controller with motor starter 2,4-4,0 A
<b>664-34135-7</b>	EOT-2 controller, for one pump only



## NOTE

For further technical information, technical drawings, accessories, spare parts or product function descriptions, see the following publication available on [SKF.com/lubrication](http://SKF.com/lubrication):

**16966 EN, 951-170-232**

## Control unit

# LMC2



### Product description

The LMC 2 is a controller for the electronic management and monitoring of lubrication systems. It combines the advantages of a specially developed printed circuit board (PCB) and a PLC in an economical, compact unit. For progressive systems, it controls the pump unit and the metering devices.

### Features and benefits

- Integrated, flexible lubrication programs
- 8 inputs / 5 outputs; suitable for complex lubrication systems
- Time- or cycle-dependent control of lubrication intervals
- Can be interfaced with common field bus systems

### Applications

- General lubrication systems with a pump and pulse generator
- Railway
- Food and beverage
- ChaLMCin lubrication systems like Lincoln Cobra and PMA
- Multi-line as well as dual-line, single-line and progressive systems

### Technical data

Function principle	control and monitoring device
Operating temperature	-10 to +70 °C, -14 to +158 °F
Supply voltage	12 or 24 V DC
Inputs	max. 8 digital inputs
Outputs	4 relay outputs, 1 electronic
Operating voltage	depending on model: 230 V AC, 24 V DC (± 10%)
Standard	CE
Protection class	IP 54
Dimensions	200 × 120 × 90 mm, 7.9 × 4.7 × 3.5 in
Mounting position	any

### Order information

Order number	Description
236-10567-6	LMC 2; 230 AC (230 V AC)
236-10567-5	LMC 2; 24 DC (24 V DC)

For use with electrically operated 3-phase pump must order motor starter separately.

### NOTE

For further technical information, technical drawings, accessories, spare parts or product function descriptions, see the following publication available on [SKF.com/lubrication](http://SKF.com/lubrication):

14004 EN

## Control unit

## LMC 301



## Product description

The LMC 301 is a compact, modularly expandable control and monitoring device. It is equipped with an LCD display and six functional keys for programming, parameter setting and signalization. The user is guided through the setup menu. Additionally, there is offered a simple-to-use PC software for parameter setting and diagnostics.

## Features and benefits

- Integrated, flexible lubrication programs
- Main device with 10 digital inputs, for 3 lubrication pumps and max. 6 pulse transmitters
- Up to 7 slave/extension modules can be added with additional inputs for max. 10 pulse transmitters
- Three lubrication pumps can be controlled and monitored

## Applications

- General and heavy industry
- Mining – stationary and mobile excavators
- Multi-, dual-, single-line and progressive systems

## Technical data

Function principle	Control and monitoring device
Operating temperature	VAC: -10 to + 50 °C; +14 to 122 °F VDC: -40 to +70°C; -40 to 158 °F
Inputs	10 count, short-circuit proof, 2 with analog
Outputs	8 count, relay outputs NO-contact 8 A, 2 of which up to 15 A
Operating voltage	depending in model 100-240 VAC, 24 VDC ±20%
Standard	CE; UL; CSA
Protection class	IP 65
Dimensions	270 × 170 × 90 mm 10.7 × 6.7 × 3.5 in
Mounting position	vertical

## Order information

Order number	Designation
--------------	-------------

<b>086500</b>	LMC 301; 24 V DC, master
<b>086501</b>	LMC 301; 100-240 V AC, master
<b>086502</b>	LMC 301; 24 V DC, I/O board, slave
<b>086503</b>	LMC 301; 100-240 AC, I/O board, slave

 NOTE

For further technical information, technical drawings, accessories, spare parts or product function descriptions, see the following publications available on [SKF.com/lubrication](http://SKF.com/lubrication):

**15967 EN, 951-150-029 EN**



# LMC 301 - Accessories



### LMC 301 motor relay assembly

Order number	Description
236-10850-7	with motor starter 0,4–0,6 A
236-10850-8	with motor starter 0,6–1,0 A
236-10850-9	with motor starter 1,0–1,6 A
236-10980-6	with motor starter 2,4–4,0 A

### LMC 301 housing

Order number	Description
086504	door housing, complete
086505	cable USB

### Order numbers

Order number	Description
086506 086507	<b>PG-M20 Cable gland kit, IP 65</b> Multiple cable gasket set (3 x) Cable gasket set (3 x)
3515-10-6020 3515-10-6620	<b>Cable glands PG-M20; complete, with cap nut, cable gasket set (2), screw plug cartridge (3)</b> Cable gasket set (2); 2-wire, Ø 0.24 in Cable gasket set (2); 4-wire, Ø 0.2 in
3515-10-7620 3515-10-6220 3515-10-6320	<b>Blind plug</b> Gasket Counter nut
3515-07-6120 3515-10-2021 3515-07-2022 179-990-486 236-11066-1	<b>Conduit glands, IP 65, with flexible metal tube (FMC), UL approved</b> Conduit glands AMG-M 20 x 1,5; UL 514B Counter nut M 20 x 1,5 Protection hose, liquid-proof protective; UL 360 (sold by the metre, when ordering specify the required length) Fuse, blade-type, FK1 3A (32 V) according to ISO 8820-3 Battery, 3 V lithium button cell, model CR3032
www.skf.com/LMC301	<b>LMC 301 software, free download</b>

<sup>1)</sup> The installation of the cable glands and cable sets to be provided and done by the customer. The customer is responsible for proper installation.



## Overview of monitoring devices

Product finder							
Product	Function type	Description	Voltage		Without housing	Stand alone	Page
			VAC	VDC			
<b>SP/SFE 30/5</b>	pulse generator	standard version	0 - 30	0 - 30	–	•	60
<b>SP/SFE 30/6 GL</b>	pulse generator	GL approved	0 - 30	0 - 30	–	•	60
<b>SP/SFE 30/3003</b>	pulse generator	ATEX II2G .. and II2D ..	0 - 30	0 - 30	–	•	60
<b>EWT2A</b>	pulse monitor	for up to 3 pulse generators	115, 230	24	•	–	61
<b>234-13161-5</b>	digital pressure switch	pressure switch for extensive lubrication point monitoring	–	20-32	–	•	62
<b>2340-00000108</b>	analogue digital pressure switch	pressure switch for simple lubrication point monitoring	–	18–30	–	•	63

## Monitoring devices

## SP/SFE 30



## Product description

SP/SFE30 pulse generators are designed to monitor oil and grease volumetric flow rates. The switching pulses are generated at a rate proportional to the volumetric flow, and the pulses from the pulse generator are evaluated by a downstream control unit. SP/SFE30/6GL pulse generators have been approved by German Lloyd for use on ships. Explosion proofed versions (SP/SFE 30/3003 ATEX) for gas and dust are available as well.


## Features and benefits

- For oil and grease up to NLGI 2
- Operating pressure of up to 600 bar (8 700 psi)
- Germanischer Lloyd-approved device available

## Applications

- For small lubricant flow measurements, in general
- Reciprocating compressors
- Oil and gas industry
- Marine

## NOTE

 For further technical information, technical drawings, accessories, spare parts or product function descriptions, see the following publications available on [SKF.com/lubrication](http://SKF.com/lubrication):

1-3009 EN, 1-3018 EN; 951-230-012 EN

## Technical data

Function principle	pulse generator based on a progressive metering principle
Operating temperature	-15 to +70 °C; +5 to 158 °F
Operating pressure	4 to 600 bar; 58 to 8 700 psi
Lubricant	oil min. viscosity 12 mm <sup>2</sup> /s
Volumetric flow range	grease up to NLGI 2
Volume/pulse <sup>1)</sup>	0,1–50 cm <sup>3</sup> /min; 0.0061–3.0512 in <sup>3</sup> /min
Contact type	reed contact
Connection	SP/SFE 30/5: plug DIN 43650
Switching voltage	SP/SFE 30/6 GL: cable 2 m, 6.56 ft
Switching capacity	0 to 30 V AC/V DC
Standard	10 W with V AC/V DC
Protection class	CE, GL (Germanischer Lloyd)
Dimensions	IP 67
	65 × 170 × 35 mm; 2.56 × 6.69 × 1.37 in

<sup>1)</sup> One pulse comprises the opening or closing of the reed contact. Volume/cycle = 0,68 cm<sup>3</sup> when a pulse monitoring unit is used (opening until reopening or closing to reclosing of reed contact).

## Order information

Order number	Designation
--------------	-------------

24-2583-2516	SP/SFE 30/5
24-2583-2517	SP/SFE 30/6 GL SP/SFE 30/3003
24-2583-2526	ATEX II2G ... and ATEX II2D ...

## SP/SFE 30 accessories

Order number	Description
--------------	-------------

406-411	straight connector G 1/4 for Ø 6 mm tube
96-1108-0058	straight connector G 1/4 for Ø 8 mm tube

# EWT2A



## Product description

The EWT2A series of universal pulse monitoring devices can be used in all standard SKF lubrication systems. The pulse, generated from a progressive metering valve sensor, a pulse generator or a rotary gear sensor, must be received within a pre-selected and defined value. Depending on the selected version, a minimum and a maximum value can be monitored simultaneously for two or three pulse inputs. The EWT2A pulse monitoring devices are available in two voltage versions and may be installed in a switching cabinet. All devices have custom-built functions integrated and can be set to meet system requirements.

## Features and benefits

- Easy installation by top hat rail mounting
- Adjustable operating modes
- Monitoring time 6-90 seconds
- Settings possible from 0,01 to 2 500 pulses/minute

## Applications

- In connection with a pulse generator for oil and grease to reliably monitor lubricant flow

### Technical data

Function principle	universal electronic control and monitoring device
Operating temperature	0 to +60 °C +32 to 140 °F
Output voltage	24 V DC +10% /-15%
Dimensions	70 x 75 x 110 mm 2.7 x 3 x 4.3 in

### Version + 471

Input voltage	100-120 V AC; 200-240 V AC
Input current rated	70 mA/35 mA
Power input	8 W
Frequency	50 - 60 Hz
Fuse	max. 6.3 A
Switching current	max. 5 A
Output voltage sensors	24 V DC

### Version + 472

Input voltage	20 to 24 V DC; 20 to 24 V AC
Input current rated	75 mA at max. fan-out of 250 mA
Power input	5 W
Frequency	DC or 50 - 60 Hz
Fuse	max. 6.3 A
Switching current	max. 5 A
Output voltage sensors	24 V DC

### Order information

Order number	Description
EWT2A01-S1-E+471	for up to 3 pulse generators, 115/230 V AC
EWT2A01-S1-E+472	for up to 3 pulse generators, 24 V DC
EWT2A04-S1-E+471	for up to 2 pulse generators, 115/230 V AC
EWT2A04-S1-E+472	for up to 2 pulse generators, 115/230 V AC

### NOTE

For further technical information, technical drawings, accessories, spare parts or product function descriptions, see the following publications available on [SKF.com/lubrication](http://SKF.com/lubrication):

**1-1700-5 EN, 951-180-001 EN**

## Monitoring devices

## 234-13161-5



## Description

This compact, maintenance-free electronic pressure switch has a 3-digit, digital display, one switching output and an analog output signal for switching point and hysteresis. Both can be adjusted via push buttons. For optimum adaptation to a particular application, the instrument has many additional adjustment parameters, e.g. switching delay times, NO and NC function of the outputs.

## Features and benefits

- Integrated pressure sensor with thin-film strain gauge on stainless steel membrane
- 3-digit, digital display
- Independently adjustable switch-back hysteresis and switching point
- Reverse polarity protection of the supply voltage, excess voltage, override and short-circuit protection are provided
- Password protected
- Directly installable via G 1/4 adapter into pressure line

## Applications

- Marine and off-shore applications
- Steel and heavy industries
- Wind turbines
- Service vehicles



## Technical data

Order number	<b>234-13161-5</b>
Function principle	digital pressure switch
Lubricant	oil, fluid grease and grease up to NLGI 2
Operating temperature	-25 to +80 °C; -13 to +175 °F
Operating pressure	max. 600 bar; max. 8 700 psi
Operating voltage	20-32 V DC
Output signal	1 x PNP, 4-20 mA
Current consumption	approx. 100 mA (without switching outlet)
Electrical connection	plug DIN 43650 (3pin+ PE) or plug 4-pin binder 714, M18 x 1
Pressure port	G1/4
Protection class	IP 65
Dimensions	35 x 119 x 48 mm 1.37 x 4.68 x 1.89 in
Mounting position	any



## NOTE

Further technical information, technical drawings, accessories, spare parts or product function descriptions available on [SKF.com/lubrication](http://SKF.com/lubrication).

# 2340-00000108



### Description

This maintenance-free analogue pressure sensors is suitable for pressure measurements for gases and fluids. It is user friendly and can be applied easily in standard or superior applications. The space-saving housing is pivotable up to 320° for optimal readability of the 4-digit, digital display. Switching output for analogue or digital signals incl. IO-Link. It comes with reverse polarity protection of the supply voltage, excess voltage, override and short circuit protection. Different value units such as bar, mbar, psi or MPa can be selected.

### Features and benefits

- IO-link incl. counter for operating hours, pressure peaks and inner temperature
- Menu-guided adjustments via push buttons
- Pre-adjustable hysteresis
- Programmable parameters, password protected
- Compact housing with 320° pivot

### Applications

- Marine and off-shore applications
- Steel and heavy industries
- Wind turbines
- Service vehicles

### Technical data

Order number	<b>2340-00000108</b>
Function principle	analogue/digital pressure switch
Lubricant	oil, fluid grease and grease up to NLGI 2
Approval	CE, EAC, UL/CSA
Operating temperature	-40 to +85 °C; -40 to +185 °F
Operating pressure	max. 600 bar; max. 8 700 psi
Overload pressure	1 000 bar; 14 500 psi
Burst pressure	1 570 bar; 22 770 psi
Operating voltage	18-30 VDC
Operating current	max. 150 mA
Current draw	≤ 50 mA
Output signal	2x PNP/NPN (NO/NC) adjustable
Analogue Output	voltage 0 .. 10 V / current 4 .. 20 mA adjustable
Interface	IO-Link 1.1
Switching frequency	170 Hz
Switching cycles	100 Mio.
Material:	
Housing	PA6.6, stainless steel 1.4301, FKM
Measuring cell	Ceramics Al2O3
Adapter	stainless steel
Electrical connection	M 12x1; 4-pole, A-coded
Pressure port	G1/4
Protection class	IP 67
Dimensions	95 x 34 x 49 mm 3.74 x 1.33 x 1.92 in
Mounting position	any



### NOTE

Further technical information, technical drawings, accessories, spare parts or product function descriptions available on [SKF.com/lubrication](http://SKF.com/lubrication).

# Index

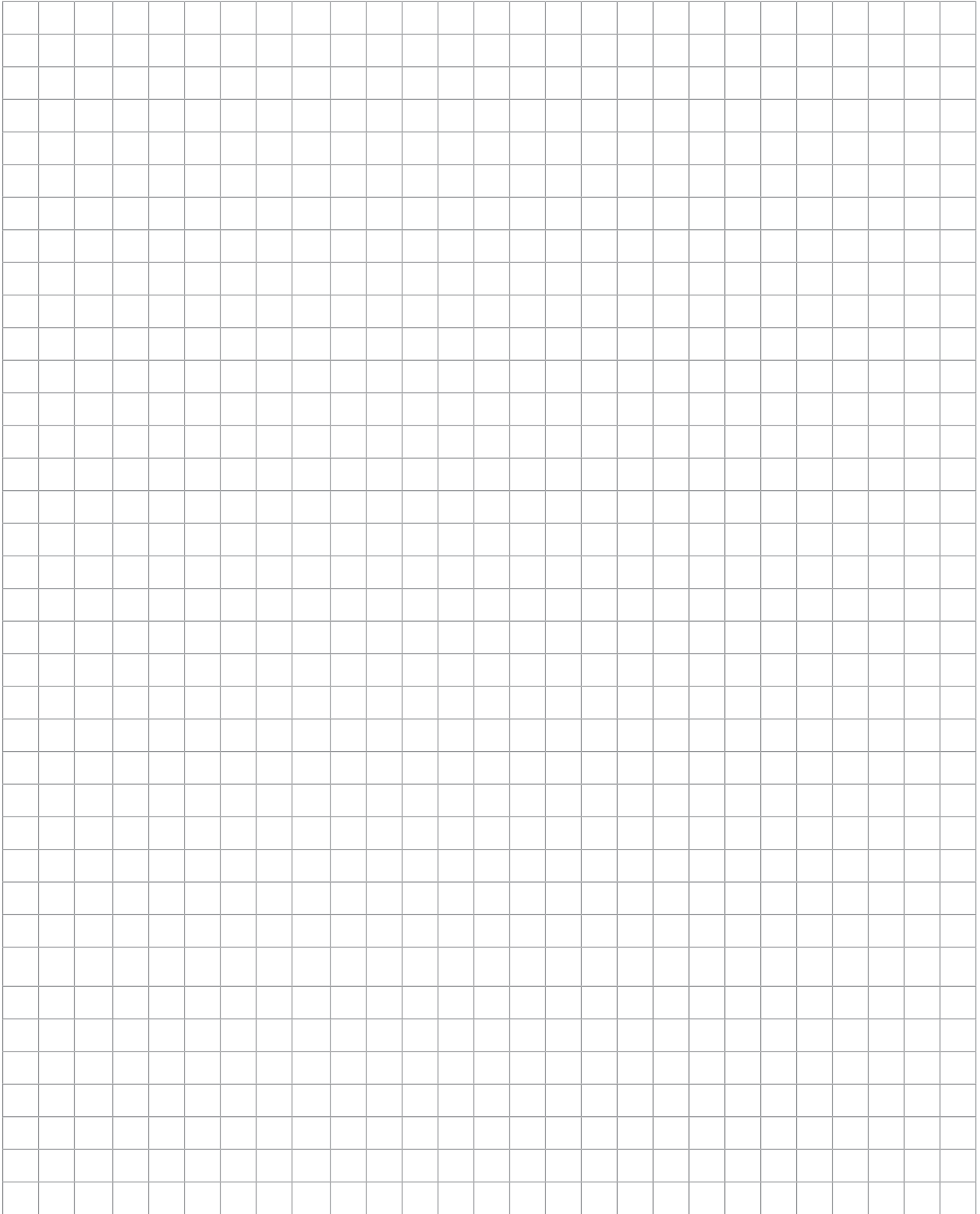
24-0254-2310 .....	35	24-1557-3521 .....	27	44-0717-2070 .....	35
24-0254-2312 .....	35	24-1557-3521 .....	35	44-0717-2071 .....	27
24-0254-2330 .....	35	24-1557-3522 .....	15	44-0717-2071 .....	35
24-0254-2331 .....	35	24-1557-3522 .....	27	44-0717-2072 .....	27
24-0254-2334 .....	35	24-1557-3522 .....	35	44-0717-2072 .....	35
24-0254-2335 .....	35	24-1557-3560 .....	23	44-0717-2073 .....	27
24-0404-2493 .....	23	24-1557-3680 .....	47	44-1202-2038 .....	13
24-0413-3490 .....	27	24-1557-3681 .....	47	95-0006-0917 .....	27
24-0651-3519 .....	23	24-1557-3683 .....	47	96-1108-0058 .....	60
24-0701-3000 .....	27	24-1721-2000 .....	27	161-140-050+924 .....	21
24-0701-3001 .....	27	24-1721-2000 .....	27	161-140-056+924 .....	21
24-0701-3002 .....	27	24-1721-2001 .....	27	161-210-075 .....	33
24-0701-3003 .....	27	24-1721-2001 .....	27	161-210-076 .....	33
24-0701-3004 .....	27	24-1751-2760 .....	23	161-210-077 .....	33
24-0701-3004 .....	27	24-1884-2324 .....	21	161-210-079 .....	33
24-0701-3035 .....	27	24-1884-2397 .....	21	161-210-080 .....	33
24-0701-3036 .....	27	24-2103-2271 .....	47	161-210-081 .....	33
24-0701-3037 .....	27	24-2103-2272 .....	47	179-990-486 .....	57
24-0701-3038 .....	27	24-2103-2273 .....	47	234-13161-5 .....	62
24-0701-3039 .....	27	24-2103-2342 .....	47	236-10567-5 .....	55
24-0701-3040 .....	27	24-2103-2344 .....	47	236-10567-6 .....	55
24-0701-3041 .....	27	24-2103-2345 .....	47	236-10850-7 .....	54
24-0701-3042 .....	27	24-2103-2346 .....	47	236-10850-7 .....	57
24-0701-3043 .....	27	24-2255-2003 .....	47	236-10850-8 .....	54
24-0701-3044 .....	27	24-2255-2004 .....	47	236-10850-8 .....	57
24-0701-3070 .....	27	24-2255-2005 .....	47	236-10850-9 .....	54
24-0701-3071 .....	27	24-2317-2017 .....	29	236-10850-9 .....	57
24-0701-3072 .....	27	24-2578-2041 .....	21	236-10980-6 .....	54
24-0701-3073 .....	27	24-2578-2044 .....	21	236-10980-6 .....	57
24-0701-3074 .....	27	24-2583-2516 .....	60	236-11066-1 .....	57
24-0701-3080 .....	27	24-2583-2517 .....	60	303-17431-1 .....	41
24-0701-3081 .....	27	24-2583-2526 .....	60	303-19285-1 .....	37
24-0701-3082 .....	27	44-0606-6302 .....	13	303-19285-1 .....	43
24-0701-3083 .....	27	44-0717-2060 .....	27	303-19285-1 .....	49
24-0701-3084 .....	27	44-0717-2061 .....	27	304-17571-1 .....	37
24-0801-2070 .....	27	44-0717-2062 .....	27	304-17571-1 .....	43
24-1557-3520 .....	15	44-0717-2063 .....	27	304-17571-1 .....	49
24-1557-3520 .....	27	44-0717-2064 .....	27	304-17574-1 .....	37
24-1557-3520 .....	35	44-0717-2069 .....	27	304-17574-1 .....	49
24-1557-3521 .....	15	44-0717-2070 .....	27	404-001 .....	13



## Index

404-002 .....	13	3515-10-2021.....	57	KFG1.U0-C5M .....	33
406-001.....	13	3515-10-6020 .....	57	KFG1.U1 .....	33
406-002 .....	13	3515-10-6220 .....	57	KFG1.U1-C5M .....	33
406-411.....	60	3515-10-6320 .....	57	KFG1.U2.....	33
600-25046-3 .....	43	3515-10-6620 .....	57	KFG1.U2-C5M .....	33
600-25046-3 .....	49	3515-10-7620.....	57	KFG1.U3 .....	33
600-25047-3 .....	43	70224.....	17	KFG1.U3-C5M .....	33
600-25047-3 .....	49	086500 .....	56	KFG1.U4 .....	33
600-26875-2 .....	37	086501 .....	56	KFG1.U4-C5M .....	33
600-26876-2 .....	37	086502 .....	56	PFHM-6-B6-C3-ATEX .....	33
600-26877-2 .....	37	086503 .....	56	PFHM-6-B6-C5-ATEX .....	33
600-27464-2.....	43	086504 .....	57		
600-27464-2.....	49	086505 .....	57		
624-25478-1.....	43	086506 .....	57		
624-25478-1 .....	49	086507.....	57		
624-25479-1.....	43	250132.....	17		
624-25479-1.....	49	276517 .....	17		
624-25480-1 .....	43	350654.....	17		
624-25480-1 .....	49	880463 .....	17		
624-25481-1.....	43	880496 .....	17		
624-25481-1.....	49	880550 .....	17		
624-25482-1 .....	43	880551.....	17		
624-25482-1 .....	49	880552.....	17		
624-25483-1 .....	41	880553 .....	17		
624-25483-1 .....	43	880554 .....	17		
624-25483-1 .....	49	880555 .....	17		
624-28362-1 .....	41	880556 .....	17		
624-29054-1 .....	37	880560 .....	17		
624-29056-1 .....	37	880561.....	17		
655-28716-1.....	37	DIN125-B6.4-ST.....	27		
660-77619-1.....	41	DIN125-B6.4-ST.....	27		
660-77619-1.....	47	DIN125-B6.4-ST.....	35		
660-77835-1.....	41	DIN934-M6-8 .....	27		
660-77835-1.....	47	DIN934-M6-8 .....	27		
664-34135-7.....	54	DIN934-M6-8 .....	35		
744-000-0107.....	29	EWT2A01-S1-E+471 .....	61		
2340-00000108.....	59	EWT2A01-S1-E+472 .....	61		
2340-00000108.....	63	EWT2A04-S1-E+471 .....	61		
3515-07-2022 .....	57	EWT2A04-S1-E+472 .....	61		
3515-07-6120.....	57	KFG1.U0.....	33		

# Notes



Notes





#### **Important information on product usage**

SKF and Lincoln lubrication systems or their components are not approved for use with gases, liquefied gases, pressurized gases in solution and fluids with a vapor pressure exceeding normal atmospheric pressure (1 013 mbar) by more than 0,5 bar at their maximum permissible temperature.



[skf.com](https://skf.com) | [skf.com/lubrication](https://skf.com/lubrication) | [lincolnindustrial.com](https://lincolnindustrial.com)

© SKF and LINCOLN are registered trademarks of the SKF Group.  
APPLE APP STORE is a service mark of Apple Inc.  
GOOGLE PLAY is a trademark of Google LLC.

© SKF Group 2020  
The contents of this publication are the copyright of the publisher and may not be reproduced (even extracts) unless prior written permission is granted. Every care has been taken to ensure the accuracy of the information contained in this publication but no liability can be accepted for any loss or damage whether direct, indirect or consequential arising out of the use of the information contained herein.

**PUB LS/P1 17478 EN** · April 2021

This publication supersedes W-113-EN.  
Certain image(s) used under license from Shutterstock.com